

## Product datasheet for **TA386873**

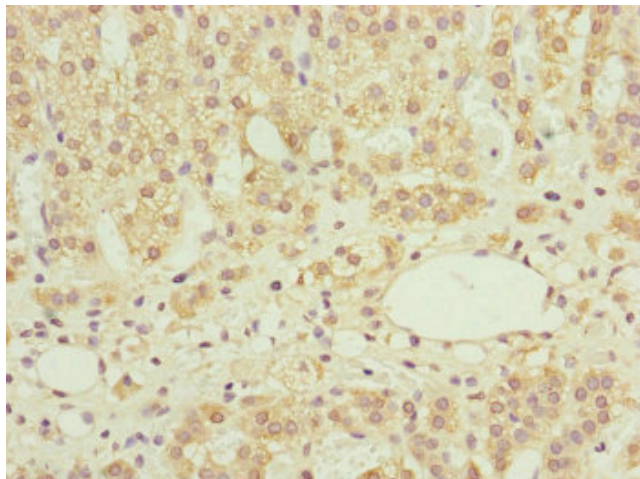
### NDUFS6 Rabbit Polyclonal Antibody

#### Product data:

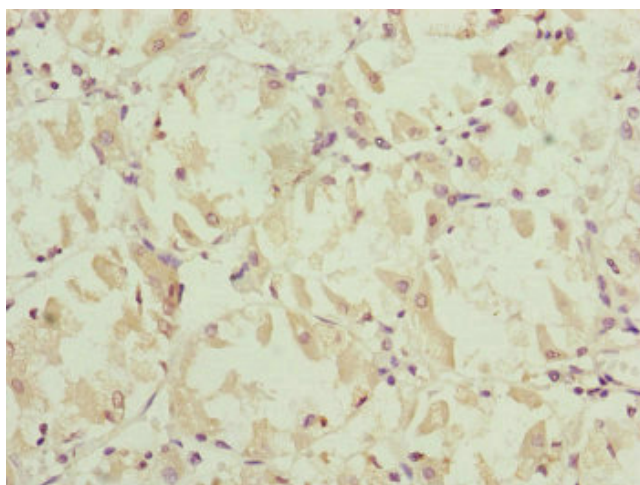
Product Type:	Primary Antibodies
Applications:	IHC, WB
Recommended Dilution:	Recommended dilution: WB:1:1000-1:5000, IHC:1:20-1:200
Reactivity:	Human
Host:	Rabbit
Isotype:	IgG
Clonality:	Polyclonal
Immunogen:	Recombinant Human NADH dehydrogenase [ubiquinone] iron-sulfur protein 6, mitochondrial protein (29-124AA)
Formulation:	PBS with 0.02% sodium azide, 50% glycerol, pH7.3.
Concentration:	lot specific
Purification:	Antigen Affinity Purified
Conjugation:	Unconjugated
Storage:	Upon receipt, store at -20°C or -80°C. Avoid repeated freeze.
Stability:	1 year from dispatch.
Database Link:	<a href="#">O75380</a>
Background:	Accessory subunit of the mitochondrial membrane respiratory chain NADH dehydrogenase (Complex I), that is believed not to be involved in catalysis. Complex I functions in the transfer of electrons from NADH to the respiratory chain. The immediate electron acceptor for the enzyme is believed to be ubiquinone.



[View online »](#)

**Product images:**

Immunohistochemistry of paraffin-embedded human adrenal gland tissue using TA386873 at dilution of 1:100



Immunohistochemistry of paraffin-embedded human gastric cancer using TA386873 at dilution of 1:100



Western blot  
All lanes: NDUFS6 antibody at 1.67 $\mu$ g/ml + HepG2 whole cell lysate  
Secondary  
Goat polyclonal to rabbit IgG at 1/10000 dilution  
Predicted band size: 14 kDa  
Observed band size: 14 kDa