

Product datasheet for **TA386872**

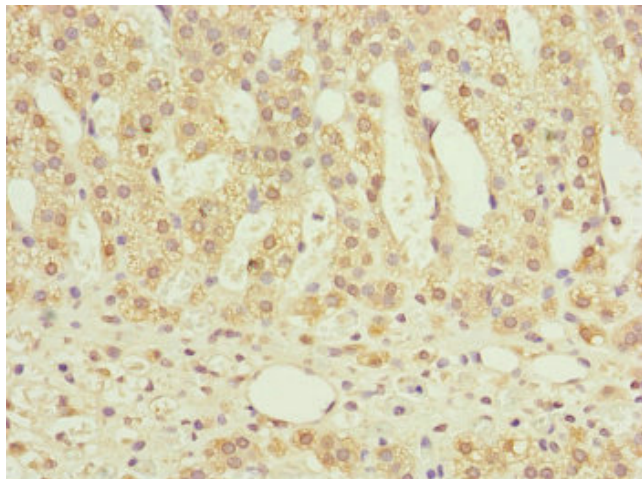
NDUFS6 Rabbit Polyclonal Antibody

Product data:

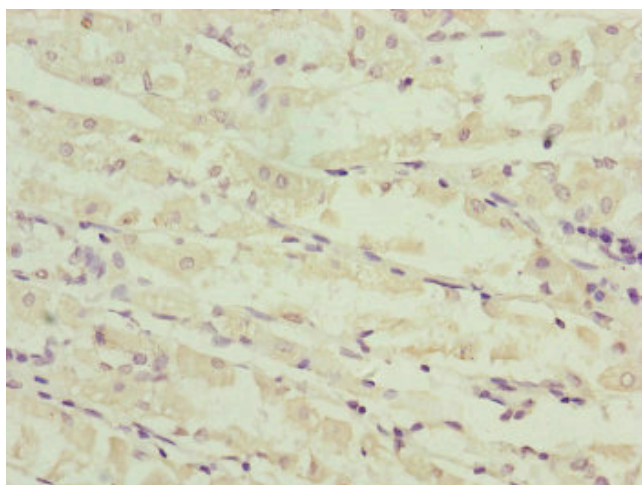
Product Type:	Primary Antibodies
Applications:	IHC, WB
Recommended Dilution:	Recommended dilution: WB:1:1000-1:5000, IHC:1:20-1:200
Reactivity:	Mouse, Human
Host:	Rabbit
Isotype:	IgG
Clonality:	Polyclonal
Immunogen:	Recombinant Human NADH dehydrogenase [ubiquinone] iron-sulfur protein 6, mitochondrial protein (29-124AA)
Formulation:	PBS with 0.02% sodium azide, 50% glycerol, pH7.3.
Concentration:	lot specific
Purification:	Antigen Affinity Purified
Conjugation:	Unconjugated
Storage:	Upon receipt, store at -20°C or -80°C. Avoid repeated freeze.
Stability:	1 year from dispatch.
Database Link:	O75380
Background:	Accessory subunit of the mitochondrial membrane respiratory chain NADH dehydrogenase (Complex I), that is believed not to be involved in catalysis. Complex I functions in the transfer of electrons from NADH to the respiratory chain. The immediate electron acceptor for the enzyme is believed to be ubiquinone.



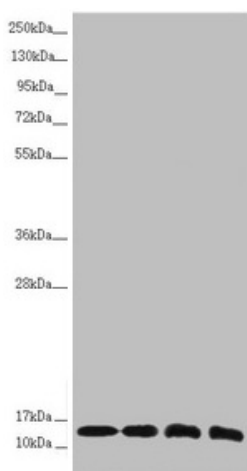
[View online »](#)

Product images:

Immunohistochemistry of paraffin-embedded human adrenal gland tissue using TA386872 at dilution of 1:100



Immunohistochemistry of paraffin-embedded human gastric cancer using TA386872 at dilution of 1:100



Western blot

All lanes: NDUFS6 antibody at 1.1 μ g/ml

Lane 1: Mouse heart tissue

Lane 2: Mouse kidney tissue

Lane 3: MCF-7 whole cell lysate

Lane 4: HepG2 whole cell lysate

Secondary

Goat polyclonal to rabbit IgG at 1/10000 dilution

Predicted band size: 14 kDa

Observed band size: 14 kDa