

## Product datasheet for **TA386870**

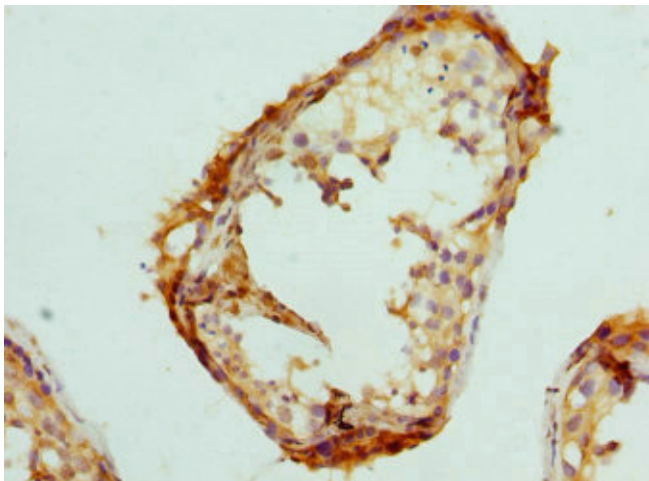
### PSME1 Rabbit Polyclonal Antibody

#### Product data:

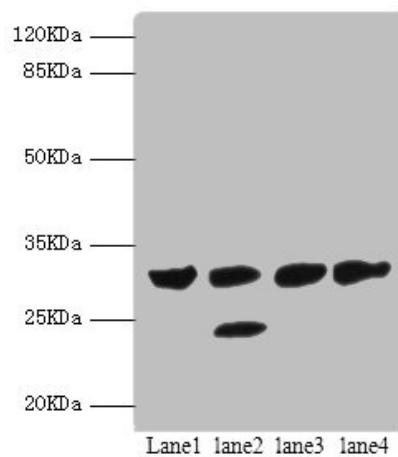
Product Type:	Primary Antibodies
Applications:	IHC, WB
Recommended Dilution:	Recommended dilution: WB:1:1000-1:5000, IHC:1:20-1:200
Reactivity:	Mouse, Human
Host:	Rabbit
Isotype:	IgG
Clonality:	Polyclonal
Immunogen:	Recombinant Human Proteasome activator complex subunit 1 protein (1-249AA)
Formulation:	PBS with 0.02% sodium azide, 50% glycerol, pH7.3.
Concentration:	lot specific
Purification:	Antigen Affinity Purified
Conjugation:	Unconjugated
Storage:	Upon receipt, store at -20°C or -80°C. Avoid repeated freeze.
Stability:	1 year from dispatch.
Database Link:	<a href="#">Q06323</a>
Background:	Implicated in immunoproteasome assembly and required for efficient antigen processing. The PA28 activator complex enhances the generation of class I binding peptides by altering the cleavage pattern of the proteasome.



[View online »](#)

**Product images:**

Immunohistochemistry of paraffin-embedded human testis tissue using TA386870 at dilution of 1:100

**Western blot**

All lanes: PSME1 antibody at 1.4 $\mu$ g/ml

Lane 1: Mouse liver tissue

Lane 2: Mouse thymus tissue

Lane 3: Raji whole cell lysate

Lane 4: HL60 whole cell lysate

Secondary

Goat polyclonal to rabbit IgG at 1/10000 dilution

Predicted band size: 29, 27 kDa

Observed band size: 29, 25 kDa