

Product datasheet for **TA386869**

PSME1 Rabbit Polyclonal Antibody

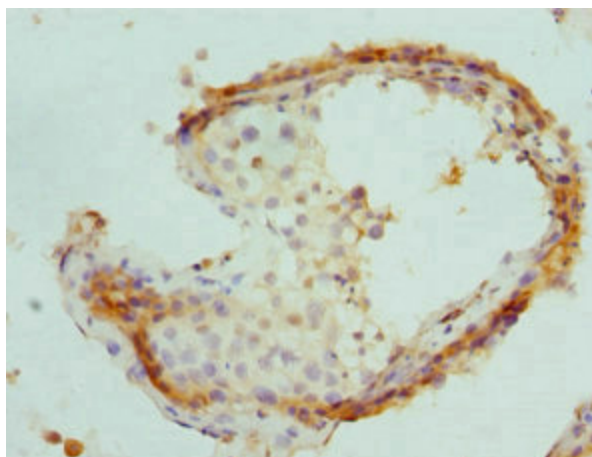
Product data:

Product Type:	Primary Antibodies
Applications:	IHC, IP, WB
Recommended Dilution:	Recommended dilution: WB:1:500-1:2000, IHC:1:20-1:200, IP:1:200-1:2000
Reactivity:	Mouse, Human
Host:	Rabbit
Isotype:	IgG
Clonality:	Polyclonal
Immunogen:	Recombinant Human Proteasome activator complex subunit 1 protein (1-249AA)
Formulation:	PBS with 0.02% sodium azide, 50% glycerol, pH7.3.
Concentration:	lot specific
Purification:	Antigen Affinity Purified
Conjugation:	Unconjugated
Storage:	Upon receipt, store at -20°C or -80°C. Avoid repeated freeze.
Stability:	1 year from dispatch.
Database Link:	Q06323
Background:	Implicated in immunoproteasome assembly and required for efficient antigen processing. The PA28 activator complex enhances the generation of class I binding peptides by altering the cleavage pattern of the proteasome.

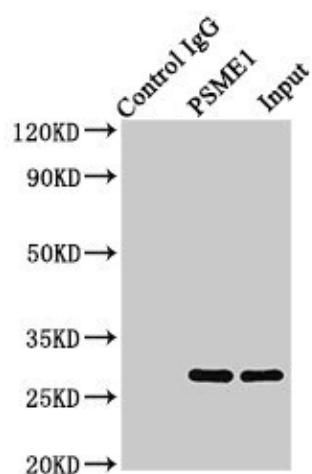


[View online »](#)

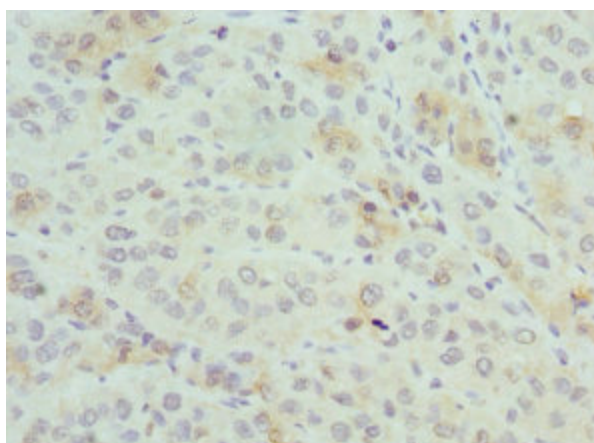
Product images:



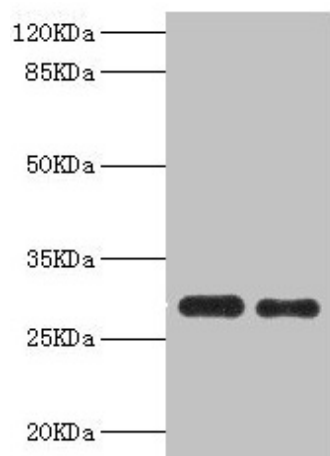
Immunohistochemistry of paraffin-embedded human testis tissue using TA386869 at dilution of 1:100



Immunoprecipitating PSME1 in Jurkat whole cell lysate
 Lane 1: Rabbit control IgG (1µg) instead of TA386869 in Jurkat whole cell lysate. For western blotting, a HRP-conjugated Protein G antibody was used as the secondary antibody (1/2000)
 Lane 2: TA386869 (8µg) + Jurkat whole cell lysate (500µg)
 Lane 3: Jurkat whole cell lysate (10µg)



Immunohistochemistry of paraffin-embedded human liver cancer using TA386869 at dilution of 1:100



Western blot
All lanes: PSME1 antibody at 0.75 μ g/ml
Lane 1: Mouse liver tissue
Lane 2: Raji whole cell lysate
Secondary
Goat polyclonal to rabbit IgG at 1/10000 dilution
Predicted band size: 29, 27 kDa
Observed band size: 29 kDa