

## Product datasheet for **TA386866M**

### GCLM Rabbit Polyclonal Antibody

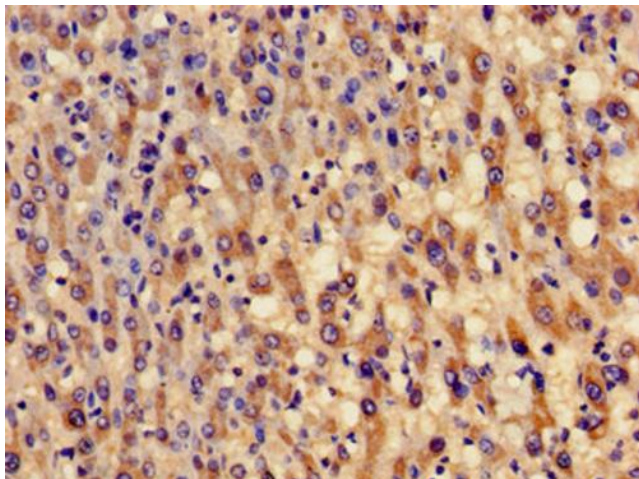
#### Product data:

Product Type:	Primary Antibodies
Applications:	IF, IHC, WB
Recommended Dilution:	Recommended dilution: WB:1:500-1:5000, IHC:1:20-1:200, IF:1:50-1:200
Reactivity:	Rat, Human
Host:	Rabbit
Isotype:	IgG
Clonality:	Polyclonal
Immunogen:	Recombinant Human Glutamate--cysteine ligase regulatory subunit protein (1-274AA)
Formulation:	Preservative: 0.03% Proclin 300 Constituents: 50% Glycerol, 0.01M PBS, pH 7.4
Concentration:	lot specific
Purification:	>95%, Protein G purified
Conjugation:	Unconjugated
Storage:	Upon receipt, store at -20°C or -80°C. Avoid repeated freeze.
Stability:	1 year from dispatch.
Database Link:	<a href="#">P48507</a>
Background:	cytosol, glutamate-cysteine ligase complex, enzyme regulator activity, glutamate-cysteine ligase catalytic subunit binding, glutamate metabolic process, glutathione biosynthetic process, positive regulation of glutamate-cysteine ligase activity, regulation of blood vessel size, response to drug, response to oxidative stress

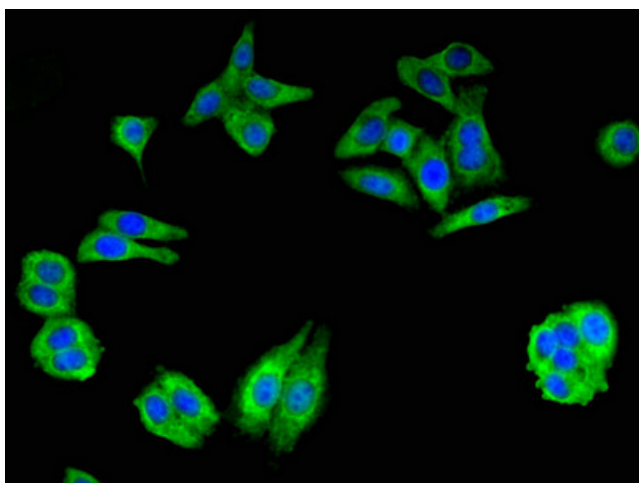


[View online »](#)

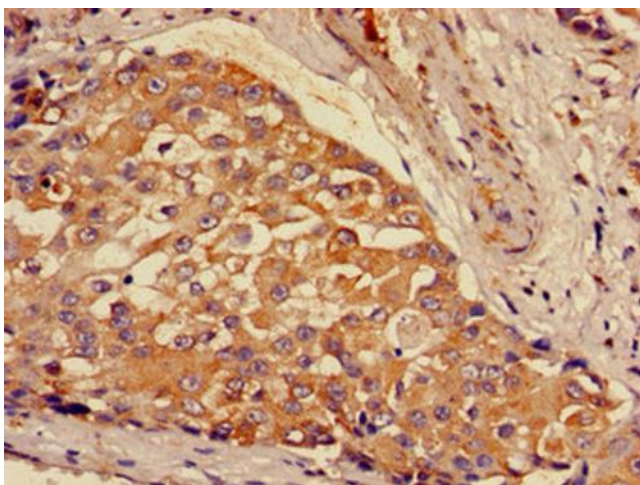
## Product images:



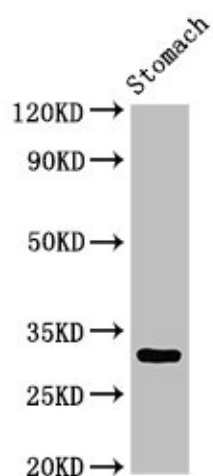
Immunohistochemistry of paraffin-embedded human liver cancer using [TA386866] at dilution of 1:100



Immunofluorescent analysis of HepG2 cells using [TA386866] at dilution of 1:100 and Alexa Fluor 488-conjugated AffiniPure Goat Anti-Rabbit IgG(H+L)



Immunohistochemistry of paraffin-embedded human breast cancer using [TA386866] at dilution of 1:100



Western Blot  
Positive WB detected in: Rat stomach tissue  
All lanes: GCLM antibody at 3 $\mu$ g/ml  
Secondary  
Goat polyclonal to rabbit IgG at 1/50000 dilution  
Predicted band size: 31, 29 kDa  
Observed band size: 31 kDa