

## Product datasheet for **TA386862M**

### **RDH11 Rabbit Polyclonal Antibody**

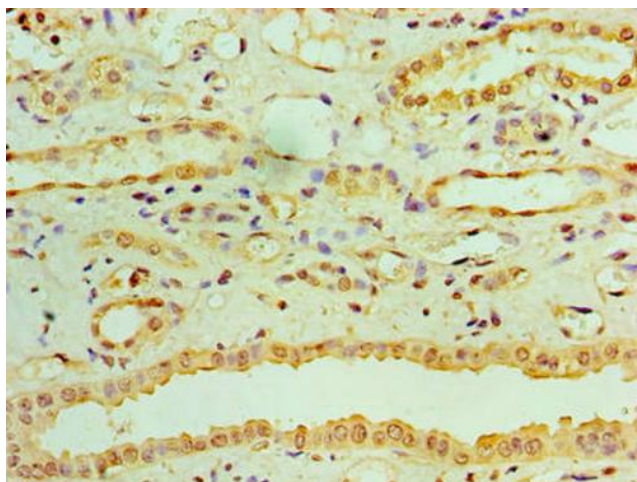
#### **Product data:**

Product Type:	Primary Antibodies
Applications:	IHC, WB
Recommended Dilution:	Recommended dilution: WB:1:1000-1:5000, IHC:1:20-1:200
Reactivity:	Human
Host:	Rabbit
Isotype:	IgG
Clonality:	Polyclonal
Immunogen:	Recombinant Human Retinol dehydrogenase 11 protein (22-318AA)
Formulation:	Preservative: 0.03% Proclin 300 Constituents: 50% Glycerol, 0.01M PBS, PH 7.4
Concentration:	lot specific
Purification:	>95%, Protein G purified
Conjugation:	Unconjugated
Storage:	Upon receipt, store at -20°C or -80°C. Avoid repeated freeze.
Stability:	1 year from dispatch.
Database Link:	<a href="#">Q8TC12</a>
Background:	Exhibits an oxidoreductive catalytic activity towards retinoids. Most efficient as an NADPH-dependent retinal reductase. Displays high activity towards 9-cis and all-trans-retinol. Also involved in the metabolism of short-chain aldehydes. No steroid dehydrogenase activity detected.

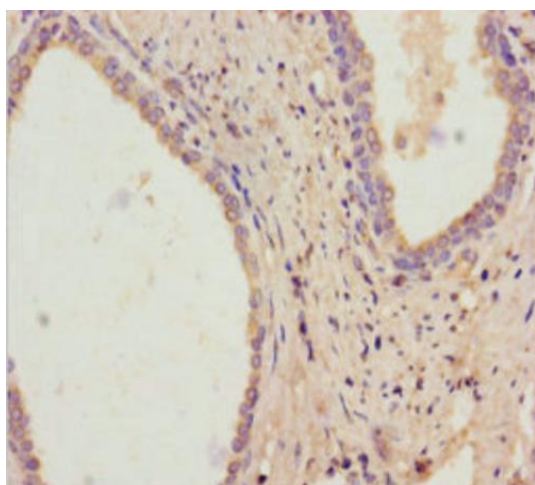


[View online »](#)

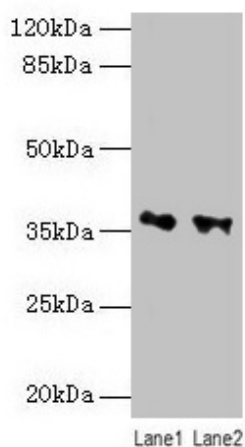
## Product images:



Immunohistochemistry of paraffin-embedded human kidney tissue using [TA386862] at dilution of 1:100



Immunohistochemistry of paraffin-embedded human prostate cancer using [TA386862] at dilution of 1:100



#### Western blot

All lanes: RDH11 antibody at 10 $\mu$ g/ml

Lane 1: PC-3 whole cell lysate

Lane 2: Hela whole cell lysate

Secondary

Goat polyclonal to rabbit IgG at 1/10000 dilution

Predicted band size: 36, 35, 28 kDa

Observed band size: 36 kDa