

## Product datasheet for **TA386852**

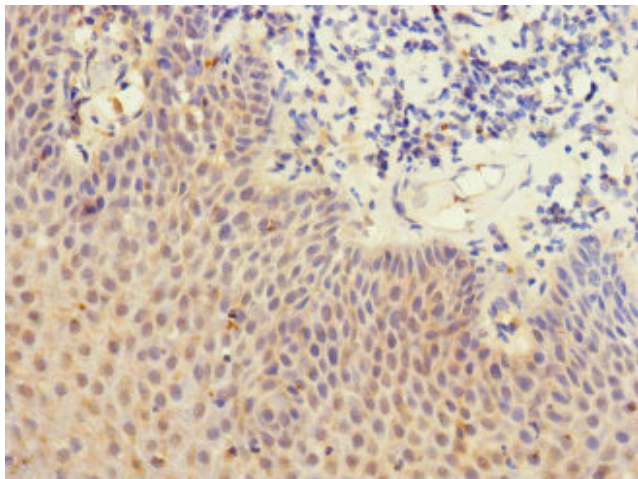
### LY75 Rabbit Polyclonal Antibody

#### Product data:

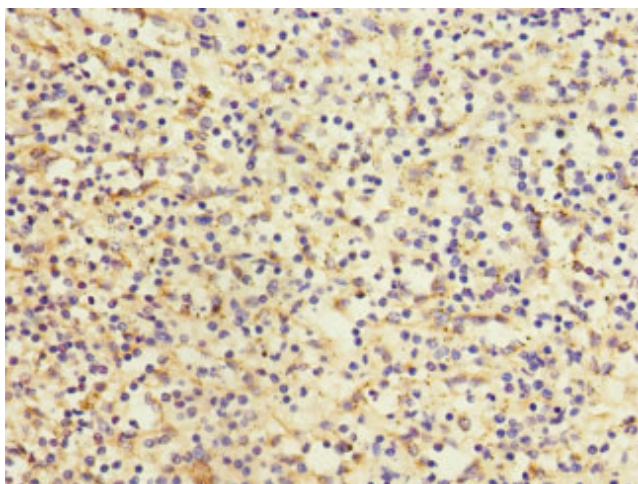
Product Type:	Primary Antibodies
Applications:	IHC, WB
Recommended Dilution:	Recommended dilution: WB:1:1000-1:5000, IHC:1:20-1:200
Reactivity:	Mouse, Human
Host:	Rabbit
Isotype:	IgG
Clonality:	Polyclonal
Immunogen:	Recombinant Human Lymphocyte antigen 75 protein (440-680AA)
Formulation:	PBS with 0.02% sodium azide, 50% glycerol, pH7.3.
Concentration:	lot specific
Purification:	Antigen Affinity Purified
Conjugation:	Unconjugated
Storage:	Upon receipt, store at -20°C or -80°C. Avoid repeated freeze.
Stability:	1 year from dispatch.
Database Link:	<a href="#">O60449</a>
Background:	Acts as an endocytic receptor to direct captured antigens from the extracellular space to a specialized antigen-processing compartment (By similarity). Causes reduced proliferation of B-lymphocytes.



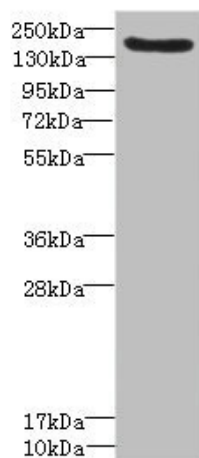
[View online »](#)

**Product images:**

Immunohistochemistry of paraffin-embedded human tonsil tissue using TA386852 at dilution of 1:100



Immunohistochemistry of paraffin-embedded human spleen tissue using TA386852 at dilution of 1:100



Western blot

All lanes: LY75 antibody IgG at 1.57 $\mu$ g/ml +  
Mouse liver tissue

Secondary

Goat polyclonal to rabbit IgG at 1/10000 dilution

Predicted band size: 199, 216, 20, 210 kDa

Observed band size: 199 kDa