

## Product datasheet for **TA386849M**

### PPP2R3B Rabbit Polyclonal Antibody

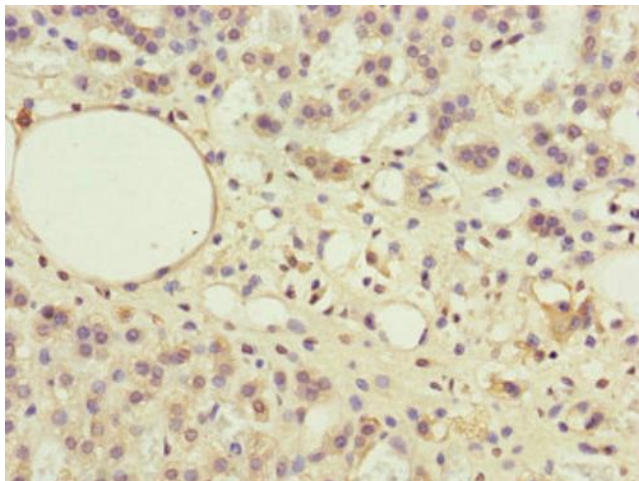
#### Product data:

Product Type:	Primary Antibodies
Applications:	IHC, WB
Recommended Dilution:	Recommended dilution: WB:1:1000-1:5000, IHC:1:20-1:200
Reactivity:	Human
Host:	Rabbit
Isotype:	IgG
Clonality:	Polyclonal
Immunogen:	Recombinant Human Serine/threonine-protein phosphatase 2A regulatory subunit B" subunit beta protein (356-575AA)
Formulation:	PBS with 0.02% sodium azide, 50% glycerol, pH7.3.
Concentration:	lot specific
Purification:	Antigen Affinity Purified
Conjugation:	Unconjugated
Storage:	Upon receipt, store at -20°C or -80°C. Avoid repeated freeze.
Stability:	1 year from dispatch.
Database Link:	<a href="#">Q9Y5P8</a>
Background:	The B regulatory subunit might modulate substrate selectivity and catalytic activity, and also might direct the localization of the catalytic enzyme to a particular subcellular compartment.

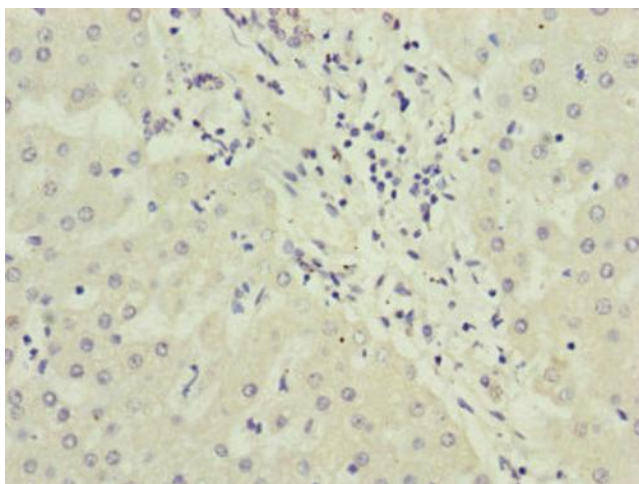


[View online »](#)

## Product images:



Immunohistochemistry of paraffin-embedded human adrenal gland tissue using [TA386849] at dilution of 1:100



Immunohistochemistry of paraffin-embedded human liver cancer using [TA386849] at dilution of 1:100



Western blot

All lanes: PPP2R3B antibody at 2.1µg/ml + HL60 whole cell lysate

Secondary

Goat polyclonal to rabbit IgG at 1/10000 dilution

Predicted band size: 66, 21 kDa

Observed band size: 66 kDa