

## Product datasheet for **TA386847**

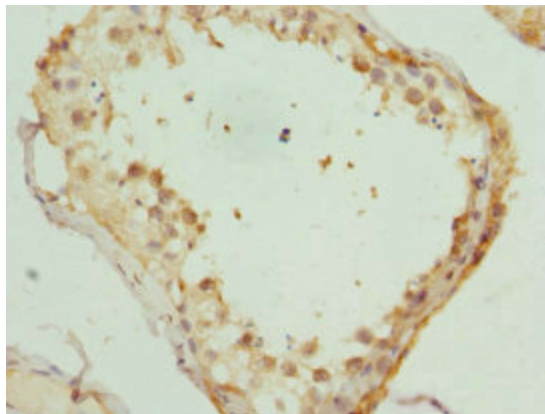
### **KIF3A Rabbit Polyclonal Antibody**

#### **Product data:**

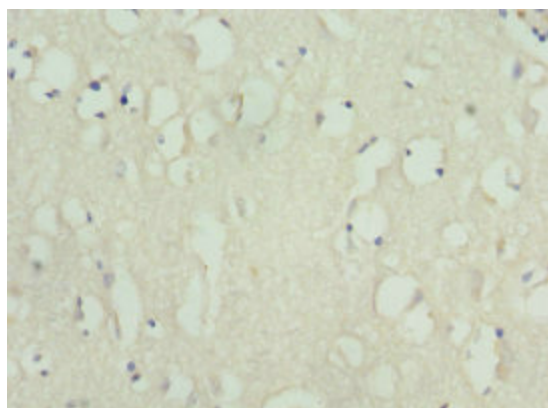
<b>Product Type:</b>	Primary Antibodies
<b>Applications:</b>	IHC, WB
<b>Recommended Dilution:</b>	Recommended dilution: WB:1:1000-1:5000, IHC:1:20-1:200
<b>Reactivity:</b>	Rat, Human
<b>Host:</b>	Rabbit
<b>Isotype:</b>	IgG
<b>Clonality:</b>	Polyclonal
<b>Immunogen:</b>	Recombinant Human Kinesin-like protein KIF3A protein (430-699AA)
<b>Formulation:</b>	PBS with 0.02% sodium azide, 50% glycerol, pH7.3.
<b>Concentration:</b>	lot specific
<b>Purification:</b>	Antigen Affinity Purified
<b>Conjugation:</b>	Unconjugated
<b>Storage:</b>	Upon receipt, store at -20°C or -80°C. Avoid repeated freeze.
<b>Stability:</b>	1 year from dispatch.
<b>Database Link:</b>	<a href="#">Q9Y496</a>
<b>Background:</b>	Microtubule-based anterograde translocator for membranous organelles. Plus end-directed microtubule sliding activity in vitro. Plays a role in primary cilia formation (By similarity).



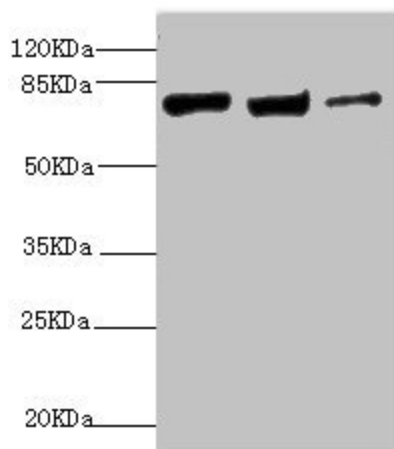
[View online »](#)

**Product images:**

Immunohistochemistry of paraffin-embedded human testis tissue using TA386847 at dilution of 1:100



Immunohistochemistry of paraffin-embedded human brain tissue using TA386847 at dilution of 1:100

**Western blot**

All lanes: KIF3A antibody at 9.45 $\mu$ g/ml

Lane 1: MCF-7 whole cell lysate

Lane 2: Rat gonad tissue

Lane 3: 293T whole cell lysate

Secondary

Goat polyclonal to rabbit IgG at 1/10000 dilution

Predicted band size: 80 kDa

Observed band size: 80 kDa