

Product datasheet for **TA386846M**

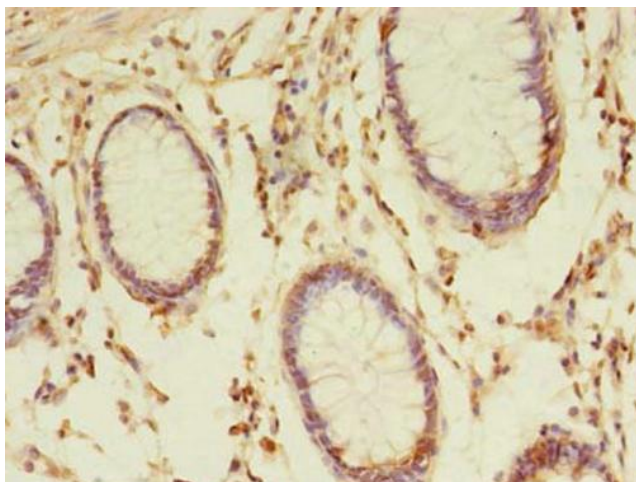
TMED3 Rabbit Polyclonal Antibody

Product data:

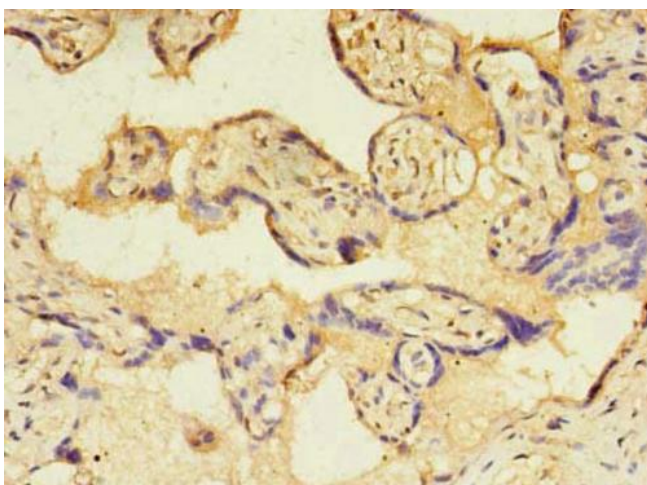
Product Type:	Primary Antibodies
Applications:	IHC, WB
Recommended Dilution:	Recommended dilution: WB:1:500-1:2000, IHC:1:20-1:200
Reactivity:	Human
Host:	Rabbit
Isotype:	IgG
Clonality:	Polyclonal
Immunogen:	Recombinant Human Transmembrane emp24 domain-containing protein 3 protein (24-180AA)
Formulation:	Preservative: 0.03% Proclin 300 Constituents: 50% Glycerol, 0.01M PBS, PH 7.4
Concentration:	lot specific
Purification:	>95%, Protein G purified
Conjugation:	Unconjugated
Storage:	Upon receipt, store at -20°C or -80°C. Avoid repeated freeze.
Stability:	1 year from dispatch.
Database Link:	Q9Y3Q3
Background:	Potential role in vesicular protein trafficking, mainly in the early secretory pathway. Contributes to the coupled localization of TMED2 and TMED10 in the cis-Golgi network.

[View online »](#)

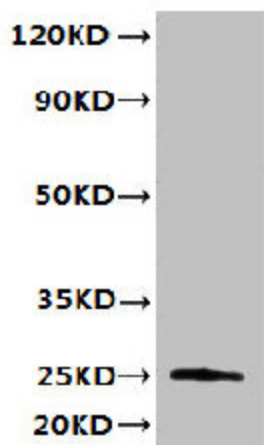
Product images:



Immunohistochemistry of paraffin-embedded human colon cancer using [TA386846] at dilution of 1:100



Immunohistochemistry of paraffin-embedded human placenta tissue using [TA386846] at dilution of 1:100



Western blot
 All lanes: TMED3 antibody at 6 μ g/ml + MCF-7 whole cell lysate
 Secondary
 Goat polyclonal to rabbit IgG at 1/10000 dilution
 Predicted band size: 25, 20 kDa
 Observed band size: 25 kDa