

Product datasheet for **TA386842M**

DHDH Rabbit Polyclonal Antibody

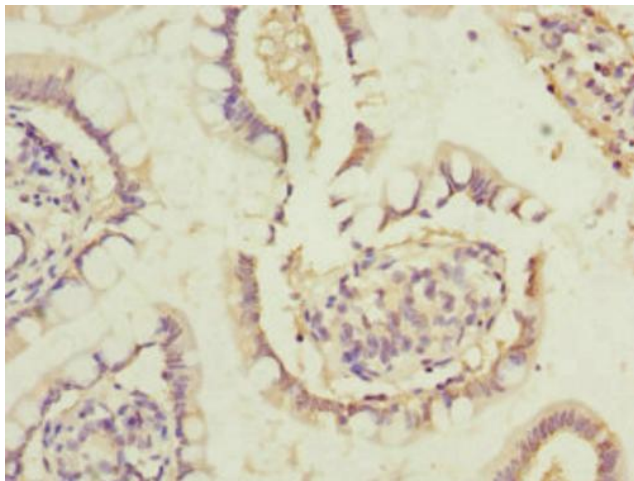
Product data:

Product Type:	Primary Antibodies
Applications:	IHC, WB
Recommended Dilution:	Recommended dilution: WB:1:1000-1:5000, IHC:1:20-1:200
Reactivity:	Mouse, Human
Host:	Rabbit
Isotype:	IgG
Clonality:	Polyclonal
Immunogen:	Recombinant Human Trans-1,2-dihydrobenzene-1,2-diol dehydrogenase protein (1-334AA)
Formulation:	PBS with 0.02% sodium azide, 50% glycerol, pH7.3.
Concentration:	lot specific
Purification:	Antigen Affinity Purified
Conjugation:	Unconjugated
Storage:	Upon receipt, store at -20°C or -80°C. Avoid repeated freeze.
Stability:	1 year from dispatch.
Database Link:	Q9UQ10
Background:	D-xylose 1-dehydrogenase (NADP+) activity, electron carrier activity, NAD(P)+ transhydrogenase activity, carbohydrate metabolic process, D-xylose catabolic process

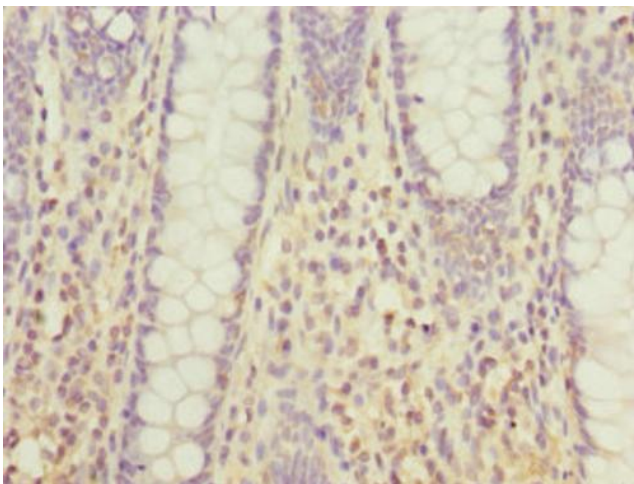


[View online »](#)

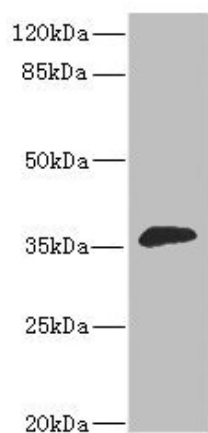
Product images:



Immunohistochemistry of paraffin-embedded human small intestine tissue using [TA386842] at dilution of 1:100



Immunohistochemistry of paraffin-embedded human colon cancer using [TA386842] at dilution of 1:100



Western blot

All lanes: DHDH antibody at 1.4µg/ml + Mouse liver tissue

Secondary

Goat polyclonal to rabbit IgG at 1/10000 dilution

Predicted band size: 36 kDa

Observed band size: 36 kDa