

Product datasheet for **TA386838M**

SERPINA10 Rabbit Polyclonal Antibody

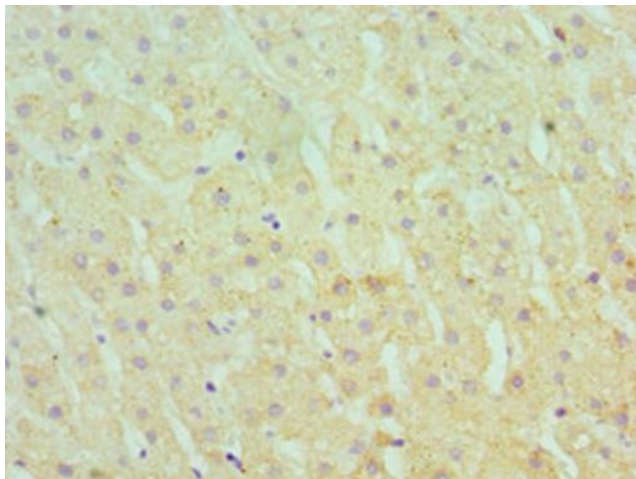
Product data:

Product Type:	Primary Antibodies
Applications:	IHC, WB
Recommended Dilution:	Recommended dilution: WB:1:500-1:2000, IHC:1:20-1:200
Reactivity:	Mouse, Human
Host:	Rabbit
Isotype:	IgG
Clonality:	Polyclonal
Immunogen:	Recombinant Human Protein Z-dependent protease inhibitor protein (165-444AA)
Formulation:	PBS with 0.02% sodium azide, 50% glycerol, pH7.3.
Concentration:	lot specific
Purification:	Antigen Affinity Purified
Conjugation:	Unconjugated
Storage:	Upon receipt, store at -20°C or -80°C. Avoid repeated freeze.
Stability:	1 year from dispatch.
Database Link:	Q9UK55
Background:	Inhibits activity of the coagulation protease factor Xa in the presence of PROZ, calcium and phospholipids. Also inhibits factor XIa in the absence of cofactors.

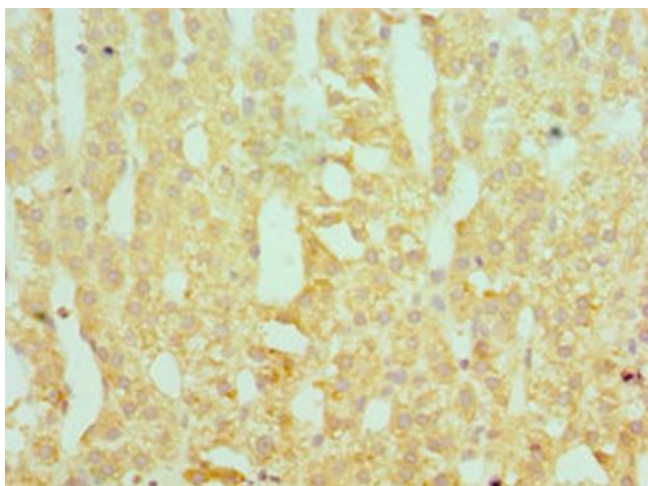


[View online »](#)

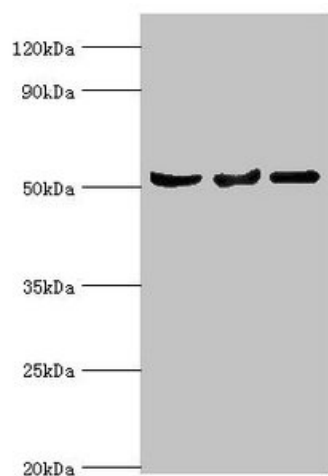
Product images:



Immunohistochemistry of paraffin-embedded human liver tissue using [TA386838] at dilution of 1:100



Immunohistochemistry of paraffin-embedded human adrenal gland tissue using [TA386838] at dilution of 1:100



Western blot

All lanes: Protein Z-dependent protease inhibitor antibody at 3 μ g/ml

Lane 1: Mouse liver tissue

Lane 2: HepG2 whole cell lysate

Lane 3: LO2 whole cell lysate

Secondary

Goat polyclonal to rabbit IgG at 1/10000 dilution

Predicted band size: 51 kDa

Observed band size: 51 kDa