

Product datasheet for **TA386837M**

NARF Rabbit Polyclonal Antibody

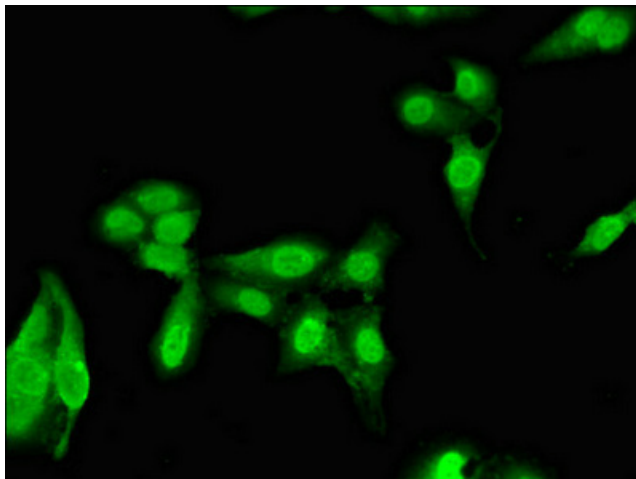
Product data:

Product Type:	Primary Antibodies
Applications:	IF, WB
Recommended Dilution:	Recommended dilution: WB:1:500-1:5000, IF:1:50-1:200
Reactivity:	Mouse, Human
Host:	Rabbit
Isotype:	IgG
Clonality:	Polyclonal
Immunogen:	Recombinant Human Nuclear prelamin A recognition factor protein (10-41AA)
Formulation:	Preservative: 0.03% Proclin 300 Constituents: 50% Glycerol, 0.01M PBS, pH 7.4
Concentration:	lot specific
Purification:	>95%, Protein G purified
Conjugation:	Unconjugated
Storage:	Upon receipt, store at -20°C or -80°C. Avoid repeated freeze.
Stability:	1 year from dispatch.
Database Link:	Q9UHQ1
Background:	lamin filament, nuclear lamina, nuclear lumen, lamin binding

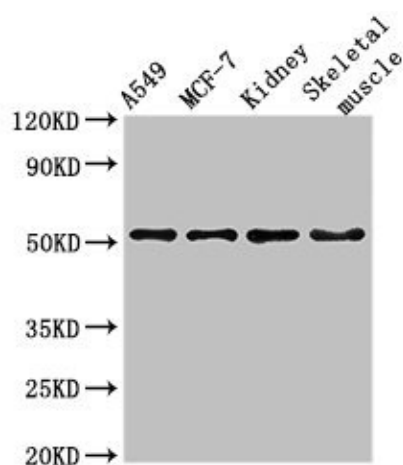


[View online »](#)

Product images:



Immunofluorescent analysis of HeLa cells using [TA386837] at dilution of 1:100 and Alexa Fluor 488-conjugated AffiniPure Goat Anti-Rabbit IgG(H+L)



Western Blot
Positive WB detected in: A549 whole cell lysate, MCF-7 whole cell lysate, Mouse kidney tissue, Mouse skeletal muscle tissue
All lanes: NARF antibody at 3µg/ml
Secondary
Goat polyclonal to rabbit IgG at 1/50000 dilution
Predicted band size: 52, 57, 46, 45 kDa
Observed band size: 52 kDa