

Product datasheet for **TA386836**

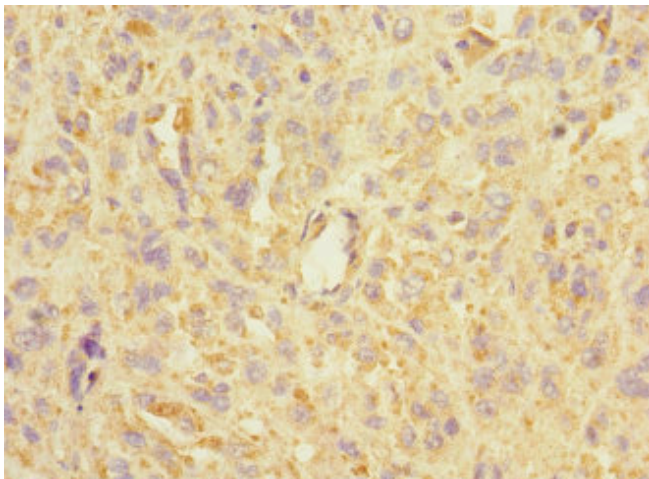
ASIC3 Rabbit Polyclonal Antibody

Product data:

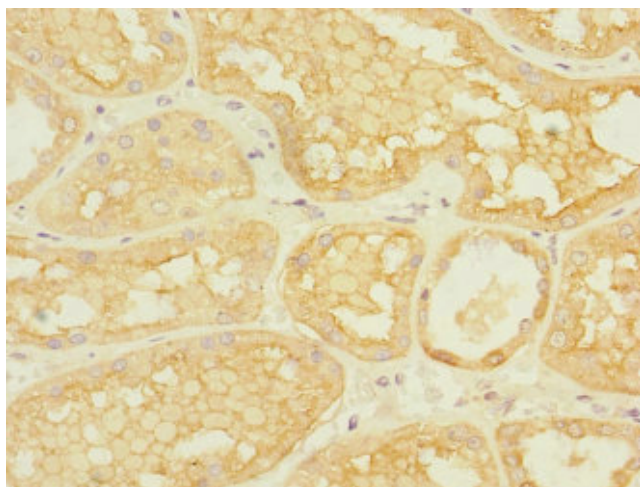
Product Type:	Primary Antibodies
Applications:	IHC, WB
Recommended Dilution:	Recommended dilution: WB:1:1000-1:5000, IHC:1:20-1:200
Reactivity:	Human
Host:	Rabbit
Isotype:	IgG
Clonality:	Polyclonal
Immunogen:	Recombinant Human Acid-sensing ion channel 3 protein (62-320AA)
Formulation:	PBS with 0.02% sodium azide, 50% glycerol, pH7.3.
Concentration:	lot specific
Purification:	Antigen Affinity Purified
Conjugation:	Unconjugated
Storage:	Upon receipt, store at -20°C or -80°C. Avoid repeated freeze.
Stability:	1 year from dispatch.
Database Link:	Q9UHC3
Background:	Cation channel with high affinity for sodium, which is gated by extracellular protons and inhibited by the diuretic amiloride. Generates a biphasic current with a fast inactivating and a slow sustained phase. In sensory neurons is proposed to mediate the pain induced by acidosis that occurs in ischemic, damaged or inflamed tissue. May be involved in hyperalgesia. May play a role in mechanoreception. Heteromeric channel assembly seems to modulate channel properties.



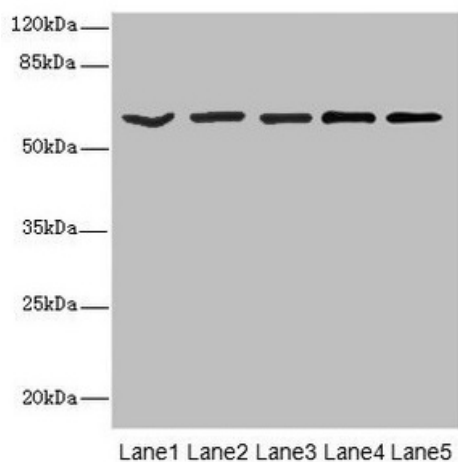
[View online »](#)

Product images:

Immunohistochemistry of paraffin-embedded human melanoma using TA386836 at dilution of 1:100



Immunohistochemistry of paraffin-embedded human kidney tissue using TA386836 at dilution of 1:100



Western blot

All lanes: ASIC3 antibody at 2.4 μ g/ml

Lane 1: Jurkat whole cell lysate

Lane 2: HepG2 whole cell lysate

Lane 3: Hela whole cell lysate

Lane 4: A549 whole cell lysate

Lane 5: A431 whole cell lysate

Secondary

Goat polyclonal to rabbit IgG at 1/10000 dilution

Predicted band size: 59, 61, 45 kDa

Observed band size: 59 kDa