

## Product datasheet for **TA386829M**

### NLRP2 Rabbit Polyclonal Antibody

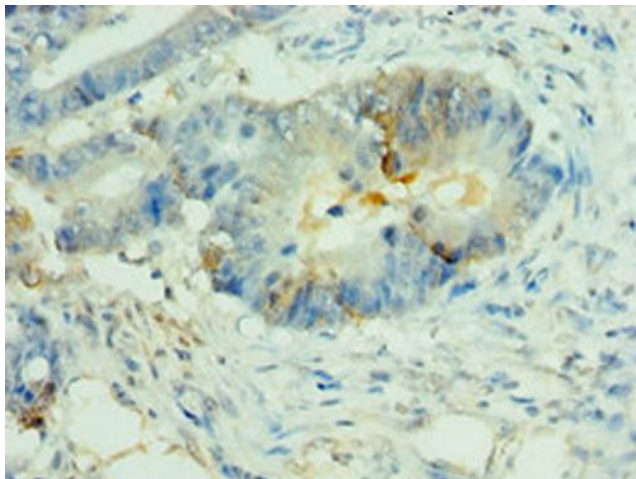
#### Product data:

Product Type:	Primary Antibodies
Applications:	IHC, WB
Recommended Dilution:	Recommended dilution: WB:1:200-1:1000, IHC:1:20-1:200
Reactivity:	Human
Host:	Rabbit
Isotype:	IgG
Clonality:	Polyclonal
Immunogen:	Recombinant Human NACHT, LRR and PYD domains-containing protein 2 protein (1-220AA)
Formulation:	PBS with 0.02% sodium azide, 50% glycerol, pH7.3.
Concentration:	lot specific
Purification:	Antigen Affinity Purified
Conjugation:	Unconjugated
Storage:	Upon receipt, store at -20°C or -80°C. Avoid repeated freeze.
Stability:	1 year from dispatch.
Database Link:	<a href="#">Q9NX02</a>
Background:	Suppresses TNF- and CD40-induced NFkB1 activity at the level of the IKK complex, by inhibiting NFkBIA degradation induced by TNF. When associated with PYCARD, activates CASP1, leading to the secretion of mature proinflammatory cytokine IL1B. May be a component of the inflammasome, a protein complex which also includes PYCARD, CARD8 and CASP1 and whose function would be the activation of proinflammatory caspases.

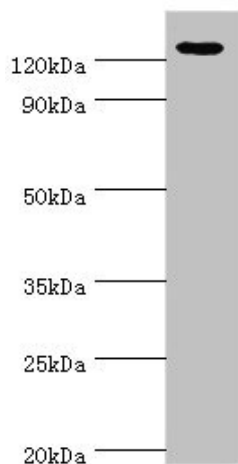


[View online »](#)

## Product images:



Immunohistochemistry of paraffin-embedded human colon cancer using [TA386829] at dilution of 1:100



Western blot  
All lanes: NLRP2 antibody at 12µg/ml + A431 whole cell lysate  
Secondary  
Goat polyclonal to rabbit IgG at 1/10000 dilution  
Predicted band size: 121, 119, 97, 118 kDa  
Observed band size: 121 kDa