

## Product datasheet for **TA386825M**

### GPAM Rabbit Polyclonal Antibody

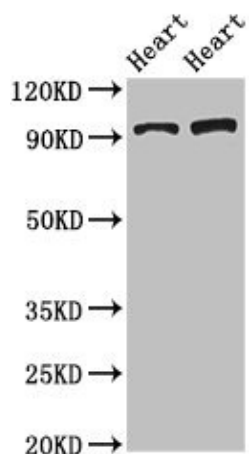
#### Product data:

Product Type:	Primary Antibodies
Applications:	IHC, WB
Recommended Dilution:	Recommended dilution: WB:1:200-1:3000, IHC:1:20-1:200
Reactivity:	Mouse, Rat, Human
Host:	Rabbit
Isotype:	IgG
Clonality:	Polyclonal
Immunogen:	Recombinant Human Glycerol-3-phosphate acyltransferase 1, mitochondrial protein (281-459AA)
Formulation:	Preservative: 0.03% Proclin 300 Constituents: 50% Glycerol, 0.01M PBS, pH 7.4
Concentration:	lot specific
Purification:	>95%, Protein G purified
Conjugation:	Unconjugated
Storage:	Upon receipt, store at -20°C or -80°C. Avoid repeated freeze.
Stability:	1 year from dispatch.
Database Link:	<a href="#">Q9HCL2</a>
Background:	Esterifies acyl-group from acyl-ACP to the sn-1 position of glycerol-3-phosphate, an essential step in glycerolipid biosynthesis.



[View online »](#)

## Product images:



Western Blot

Positive WB detected in: Rat heart tissue, Mouse heart tissue

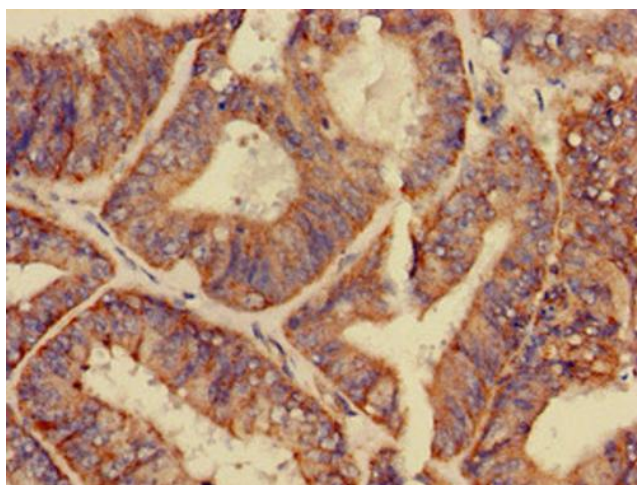
All lanes: GPAM antibody at 3.4µg/ml

Secondary

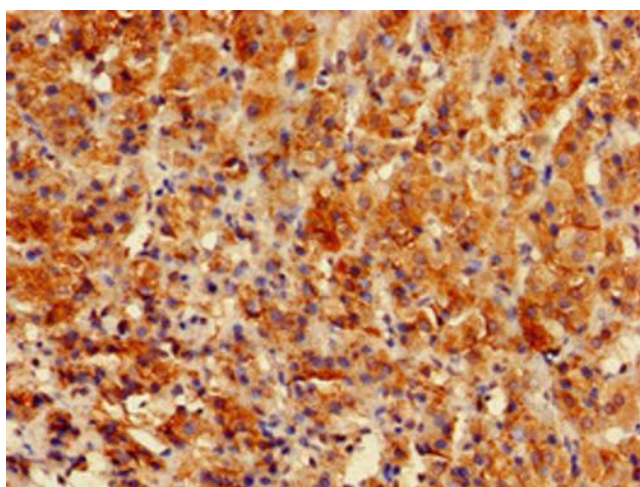
Goat polyclonal to rabbit IgG at 1/50000 dilution

Predicted band size: 94 kDa

Observed band size: 94 kDa



Immunohistochemistry of paraffin-embedded human endometrial cancer using [TA386825] at dilution of 1:100



Immunohistochemistry of paraffin-embedded human adrenal gland tissue using [TA386825] at dilution of 1:100