

## Product datasheet for **TA386823**

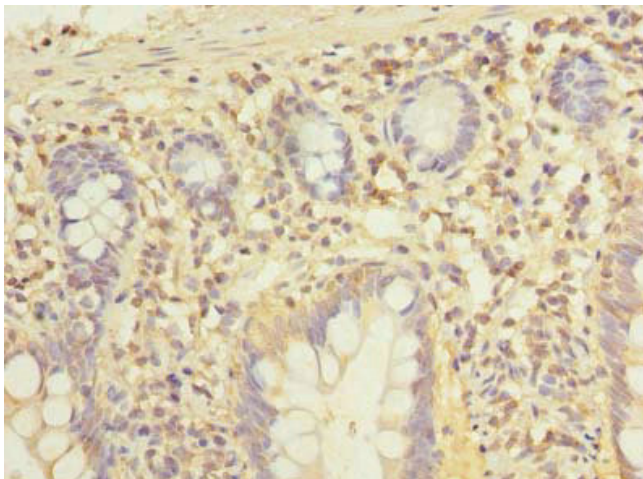
### ADGRL4 Rabbit Polyclonal Antibody

#### Product data:

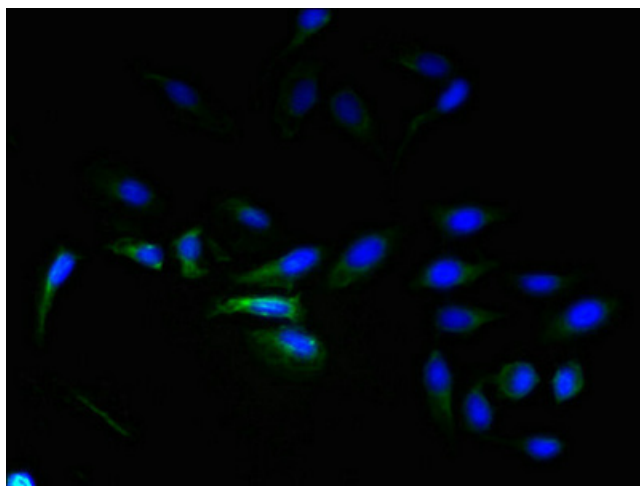
Product Type:	Primary Antibodies
Applications:	IF, IHC, WB
Recommended Dilution:	Recommended dilution: WB:1:500-1:2000, IHC:1:20-1:200, IF:1:50-1:200
Reactivity:	Human
Host:	Rabbit
Isotype:	IgG
Clonality:	Polyclonal
Immunogen:	Recombinant Human Adhesion G protein-coupled receptor L4 protein (85-299AA)
Formulation:	Preservative: 0.03% Proclin 300 Constituents: 50% Glycerol, 0.01M PBS, PH 7.4
Concentration:	lot specific
Purification:	>95%, Protein G purified
Conjugation:	Unconjugated
Storage:	Upon receipt, store at -20°C or -80°C. Avoid repeated freeze.
Stability:	1 year from dispatch.
Database Link:	<a href="#">Q9HBW9</a>
Background:	Endothelial orphan receptor that acts as a key regulator of angiogenesis.



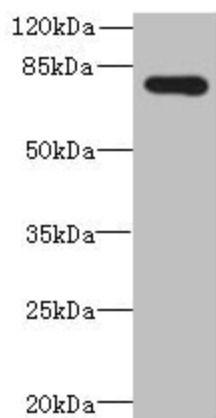
[View online »](#)

**Product images:**

Immunohistochemistry of paraffin-embedded human small intestine tissue using TA386823 at dilution of 1:100



Immunofluorescent analysis of HeLa cells using TA386823 at dilution of 1:100 and Alexa Fluor 488-conjugated AffiniPure Goat Anti-Rabbit IgG(H+L)



Western blot  
All lanes: ADGRL4 antibody at 4 $\mu$ g/ml + HeLa  
whole cell lysate  
Secondary  
Goat polyclonal to rabbit IgG at 1/10000 dilution  
Predicted band size: 78 kDa  
Observed band size: 78 kDa