

Product datasheet for **TA386821M**

ARMT1 Rabbit Polyclonal Antibody

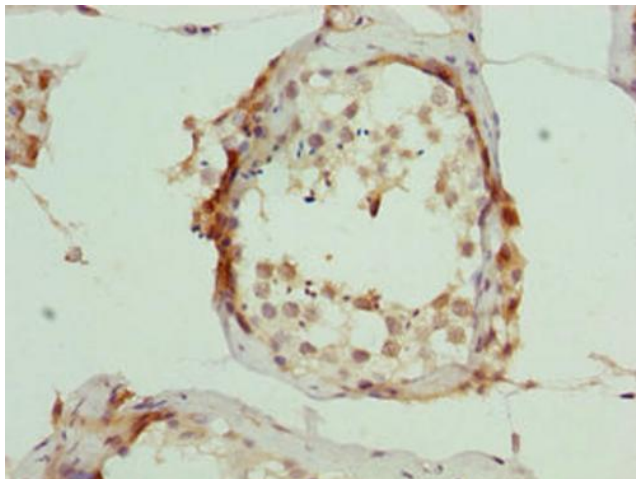
Product data:

Product Type:	Primary Antibodies
Applications:	IHC, WB
Recommended Dilution:	Recommended dilution: WB:1:1000-1:5000, IHC:1:20-1:200
Reactivity:	Human
Host:	Rabbit
Isotype:	IgG
Clonality:	Polyclonal
Immunogen:	Recombinant Human Protein-glutamate O-methyltransferase protein (2-250AA)
Formulation:	Preservative: 0.03% Proclin 300 Constituents: 50% Glycerol, 0.01M PBS, PH 7.4
Concentration:	lot specific
Purification:	>95%, Protein G purified
Conjugation:	Unconjugated
Storage:	Upon receipt, store at -20°C or -80°C. Avoid repeated freeze.
Stability:	1 year from dispatch.
Database Link:	Q9H993
Background:	O-methyltransferase that methylates glutamate residues of target proteins to form gamma-glutamyl methyl ester residues. Methylates PCNA, suggesting it is involved in the DNA damage response.

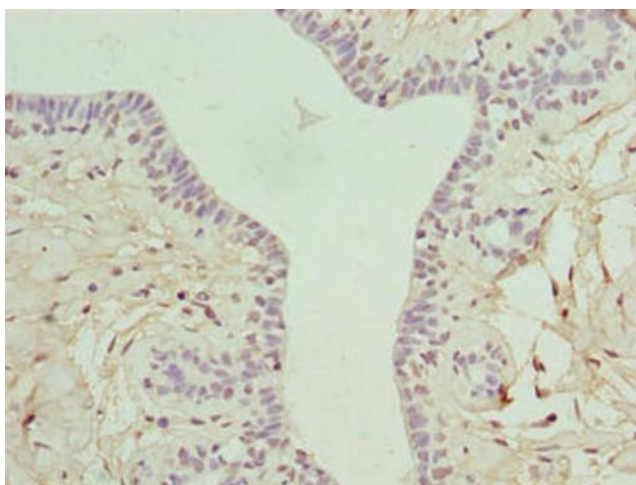


[View online »](#)

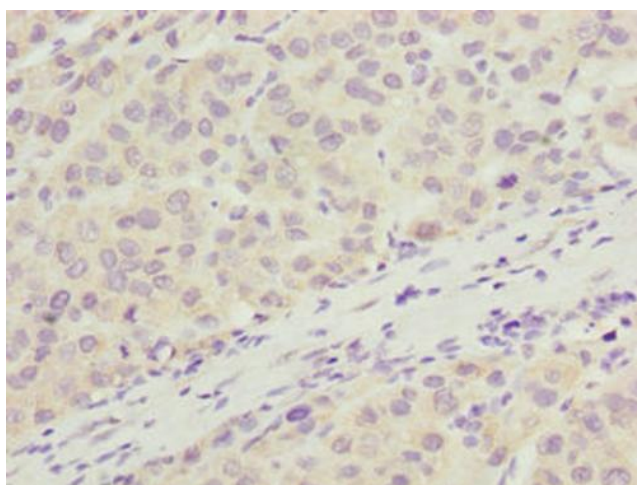
Product images:



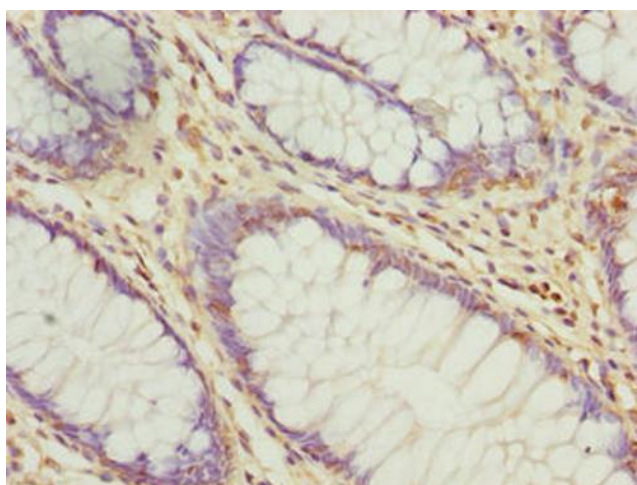
Immunohistochemistry of paraffin-embedded human testis tissue using [TA386821] at dilution of 1:100



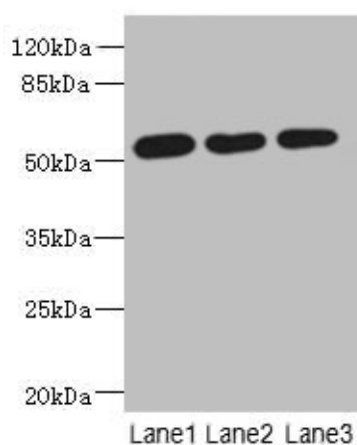
Immunohistochemistry of paraffin-embedded human breast cancer using [TA386821] at dilution of 1:100



Immunohistochemistry of paraffin-embedded human liver cancer using [TA386821] at dilution of 1:100



Immunohistochemistry of paraffin-embedded human colon cancer using [TA386821] at dilution of 1:100



Western blot
All lanes: ARMT1 antibody at 0.6µg/ml
Lane 1: MCF-7 whole cell lysate
Lane 2: A431 whole cell lysate
Lane 3: 293T whole cell lysate
Secondary
Goat polyclonal to rabbit IgG at 1/10000 dilution
Predicted band size: 52 kDa
Observed band size: 52 kDa