

Product datasheet for **TA386819M**

UBE2Z Rabbit Polyclonal Antibody

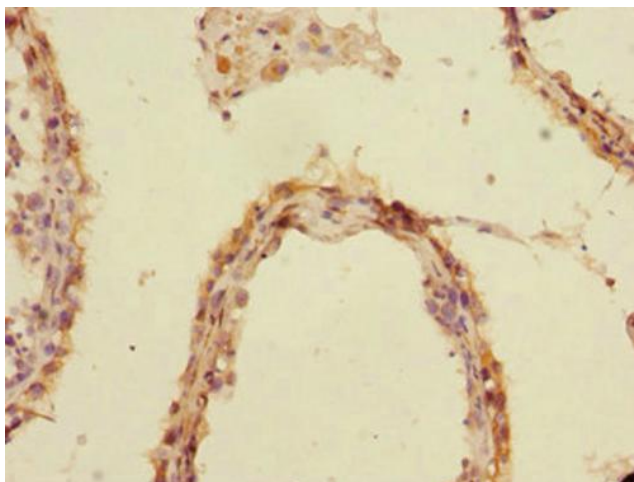
Product data:

Product Type:	Primary Antibodies
Applications:	IHC, WB
Recommended Dilution:	Recommended dilution: WB:1:1000-1:5000, IHC:1:20-1:200
Reactivity:	Mouse, Human
Host:	Rabbit
Isotype:	IgG
Clonality:	Polyclonal
Immunogen:	Recombinant Human Ubiquitin-conjugating enzyme E2 Z protein (115-354AA)
Formulation:	PBS with 0.02% sodium azide, 50% glycerol, pH7.3.
Concentration:	lot specific
Purification:	Antigen Affinity Purified
Conjugation:	Unconjugated
Storage:	Upon receipt, store at -20°C or -80°C. Avoid repeated freeze.
Stability:	1 year from dispatch.
Database Link:	Q9H832
Background:	Catalyzes the covalent attachment of ubiquitin to other proteins (By similarity). Specific substrate for UBA6, not charged with ubiquitin by UBE1. May be involved in apoptosis regulation.

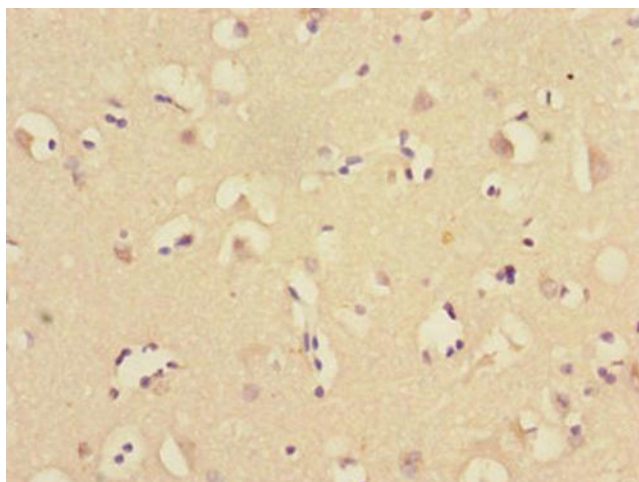


[View online »](#)

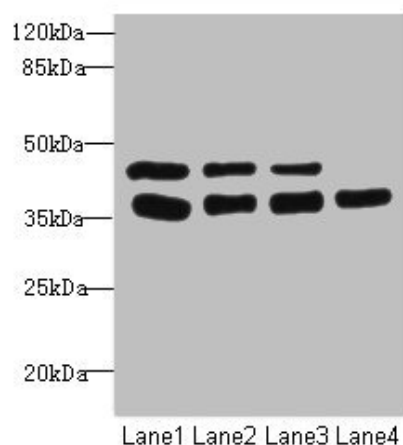
Product images:



Immunohistochemistry of paraffin-embedded human testis tissue using [TA386819] at dilution of 1:100



Immunohistochemistry of paraffin-embedded human brain tissue using [TA386819] at dilution of 1:100



Western blot

All lanes: UBE2Z antibody at 3.37 μ g/ml

Lane 1: MCF-7 whole cell lysate

Lane 2: HepG2 whole cell lysate

Lane 3: Hela whole cell lysate

Lane 4: Mouse gonadal tissue

Secondary

Goat polyclonal to rabbit IgG at 1/10000 dilution

Predicted band size: 39, 29 kDa

Observed band size: 39 kDa