

## Product datasheet for **TA386802M**

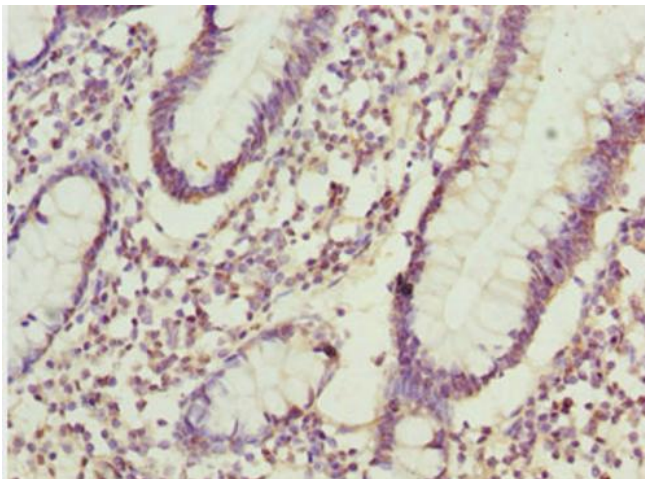
### ADPGK Rabbit Polyclonal Antibody

#### Product data:

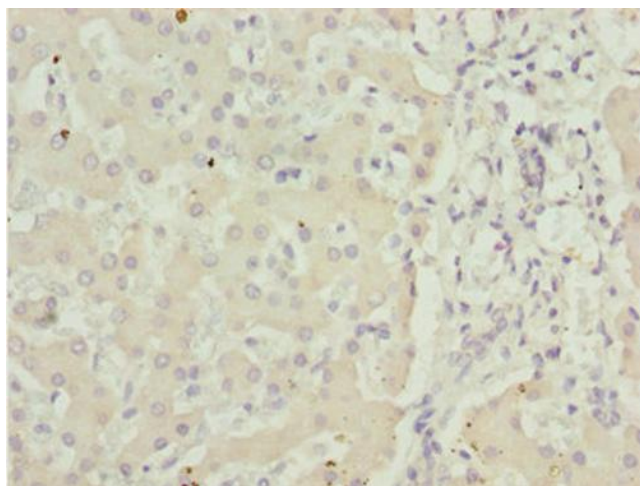
Product Type:	Primary Antibodies
Applications:	IHC, WB
Recommended Dilution:	Recommended dilution: WB:1:1000-1:5000, IHC:1:20-1:200
Reactivity:	Human
Host:	Rabbit
Isotype:	IgG
Clonality:	Polyclonal
Immunogen:	Recombinant Human ADP-dependent glucokinase protein (218-497AA)
Formulation:	PBS with 0.02% sodium azide, 50% glycerol, pH7.3.
Concentration:	lot specific
Purification:	Antigen Affinity Purified
Conjugation:	Unconjugated
Storage:	Upon receipt, store at -20°C or -80°C. Avoid repeated freeze.
Stability:	1 year from dispatch.
Database Link:	<a href="#">Q9BRR6</a>
Background:	Catalyzes the phosphorylation of D-glucose to D-glucose 6-phosphate using ADP as the phosphate donor. GDP and CDP can replace ADP, but with reduced efficiency (By similarity).



[View online »](#)

**Product images:**

Immunohistochemistry of paraffin-embedded human small intestine tissue using [TA386802] at dilution of 1:100



Immunohistochemistry of paraffin-embedded human liver tissue using [TA386802] at dilution of 1:100



Western blot

All lanes: ADPGK antibody at 1.02µg/ml + HeLa whole cell lysate

Secondary

Goat polyclonal to rabbit IgG at 1/10000 dilution

Predicted band size: 55, 54, 29, 25, 39, 9 kDa

Observed band size: 55 kDa