

Product datasheet for **TA386791**

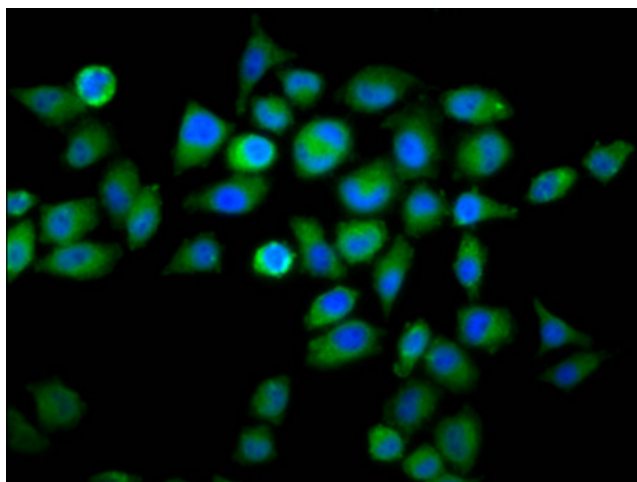
WDFY2 Rabbit Polyclonal Antibody

Product data:

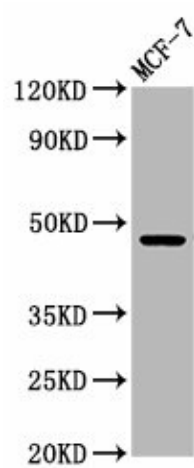
Product Type:	Primary Antibodies
Applications:	IF, WB
Recommended Dilution:	Recommended dilution: WB:1:500-1:5000, IF:1:50-1:200
Reactivity:	Human
Host:	Rabbit
Isotype:	IgG
Clonality:	Polyclonal
Immunogen:	Recombinant Human WD repeat and FYVE domain-containing protein 2 protein (2-114AA)
Formulation:	Preservative: 0.03% Proclin 300 Constituents: 50% Glycerol, 0.01M PBS, pH 7.4
Concentration:	lot specific
Purification:	>95%, Protein G purified
Conjugation:	Unconjugated
Storage:	Upon receipt, store at -20°C or -80°C. Avoid repeated freeze.
Stability:	1 year from dispatch.
Database Link:	Q96P53
Background:	Acts in an adapter protein-like fashion to mediate the interaction between the kinase PRKCZ and its substrate VAMP2 and increases the PRKCZ-dependent phosphorylation of VAMP2 (PubMed:17313651). Positively regulates adipocyte differentiation, by facilitating the phosphorylation and thus inactivation of the anti-adipogenic transcription factor FOXO1 by the kinase AKT1 (PubMed:18388859). Plays a role in endosomal control of AKT2 signaling; required for insulin-stimulated AKT2 phosphorylation and glucose uptake and insulin-stimulated phosphorylation of AKT2 substrates (By similarity). Participates in transferrin receptor endocytosis (PubMed:16873553).



[View online »](#)

Product images:

Immunofluorescence staining of HeLa cells with TA386791 at 1:66, counter-stained with DAPI. The cells were fixed in 4% formaldehyde, permeabilized using 0.2% Triton X-100 and blocked in 10% normal Goat Serum. The cells were then incubated with the antibody overnight at 4°C. The secondary antibody was Alexa Fluor 488-conjugated AffiniPure Goat Anti-Rabbit IgG(H+L).



Western Blot
Positive WB detected in: MCF-7 whole cell lysate
All lanes: WDFY2 antibody at 5.6µg/ml
Secondary
Goat polyclonal to rabbit IgG at 1/50000 dilution
Predicted band size: 46 kDa
Observed band size: 46 kDa