

## Product datasheet for **TA386790M**

### CHMP6 Rabbit Polyclonal Antibody

#### Product data:

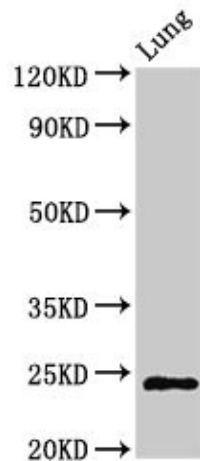
Product Type:	Primary Antibodies
Applications:	IHC, WB
Recommended Dilution:	Recommended dilution: WB:1:500-1:5000, IHC:1:20-1:200
Reactivity:	Rat, Human
Host:	Rabbit
Isotype:	IgG
Clonality:	Polyclonal
Immunogen:	Recombinant Human Charged multivesicular body protein 6 protein (2-201AA)
Formulation:	Preservative: 0.03% Proclin 300 Constituents: 50% Glycerol, 0.01M PBS, PH 7.4
Concentration:	lot specific
Purification:	>95%, Protein G purified
Conjugation:	Unconjugated
Storage:	Upon receipt, store at -20°C or -80°C. Avoid repeated freeze.
Stability:	1 year from dispatch.
Database Link:	<a href="#">Q96FZ7</a>



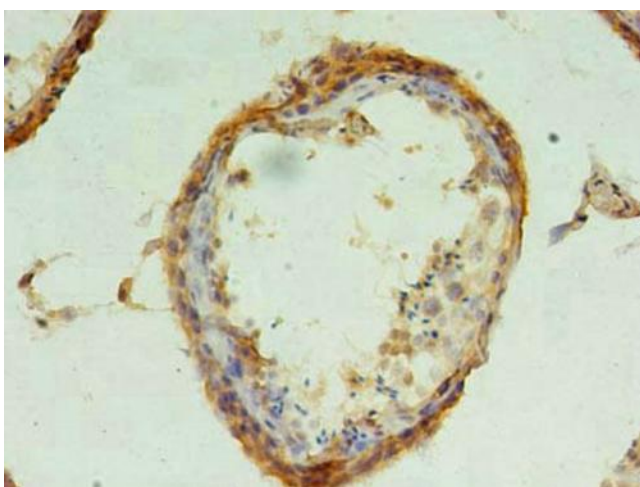
[View online »](#)

**Background:**

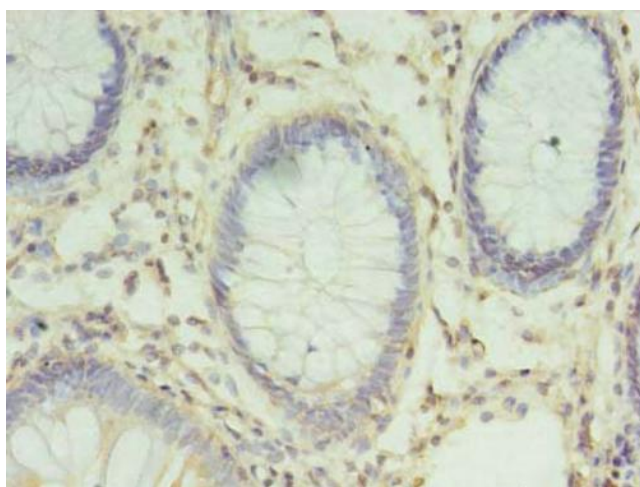
Probable core component of the endosomal sorting required for transport complex III (ESCRT-III) which is involved in multivesicular bodies (MVBs) formation and sorting of endosomal cargo proteins into MVBs. MVBs contain intraluminal vesicles (ILVs) that are generated by invagination and scission from the limiting membrane of the endosome and mostly are delivered to lysosomes enabling degradation of membrane proteins, such as stimulated growth factor receptors, lysosomal enzymes and lipids. The MVB pathway appears to require the sequential function of ESCRT-O, -I, -II and -III complexes. ESCRT-III proteins mostly dissociate from the invaginating membrane before the ILV is released. The ESCRT machinery also functions in topologically equivalent membrane fission events, such as the terminal stages of cytokinesis and the budding of enveloped viruses (HIV-1 and other lentiviruses). ESCRT-III proteins are believed to mediate the necessary vesicle extrusion and/or membrane fission activities, possibly in conjunction with the AAA ATPase VPS4. In the ESCRT-III complex, it probably serves as an acceptor for the ESCRT-II complex on endosomal membranes.

**Product images:**


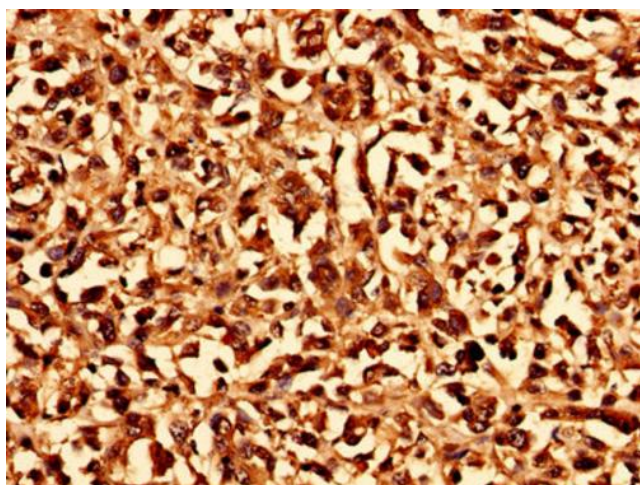
Western Blot  
Positive WB detected in: Rat lung tissue  
All lanes: CHMP6 antibody at 3µg/ml  
Secondary  
Goat polyclonal to rabbit IgG at 1/50000 dilution  
Predicted band size: 24 kDa  
Observed band size: 24 kDa



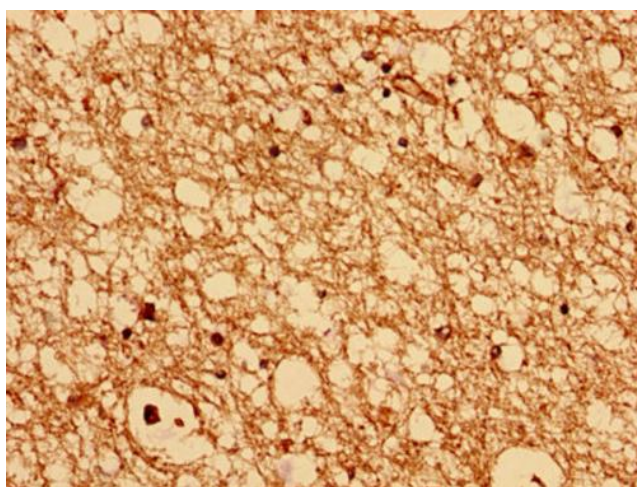
Immunohistochemistry of paraffin-embedded human testis tissue using [TA386790] at dilution of 1:100



Immunohistochemistry of paraffin-embedded human colon cancer using [TA386790] at dilution of 1:100



Immunohistochemistry analysis of human melanoma using [TA386790] at dilution of 1:100



Immunohistochemistry analysis of human brain tissue using [TA386790] at dilution of 1:100