

Product datasheet for **TA386785M**

PPP2R3C Rabbit Polyclonal Antibody

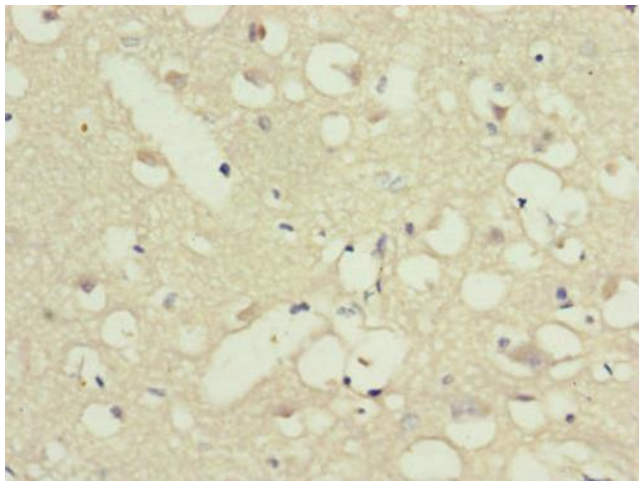
Product data:

Product Type:	Primary Antibodies
Applications:	IHC, WB
Recommended Dilution:	Recommended dilution: WB:1:1000-1:5000, IHC:1:20-1:200
Reactivity:	Mouse, Human
Host:	Rabbit
Isotype:	IgG
Clonality:	Polyclonal
Immunogen:	Recombinant Human Serine/threonine-protein phosphatase 2A regulatory subunit B" subunit gamma protein (1-160AA)
Formulation:	PBS with 0.02% sodium azide, 50% glycerol, pH7.3.
Concentration:	lot specific
Purification:	Antigen Affinity Purified
Conjugation:	Unconjugated
Storage:	Upon receipt, store at -20°C or -80°C. Avoid repeated freeze.
Stability:	1 year from dispatch.
Database Link:	Q969Q6
Background:	May regulate MCM3AP phosphorylation through phosphatase recruitment. May act as a negative regulator of ABCB1 expression and function through the dephosphorylation of ABCB1 by TFPI2/PPP2R3C complex. May play a role in the activation-induced cell death of B-cells.

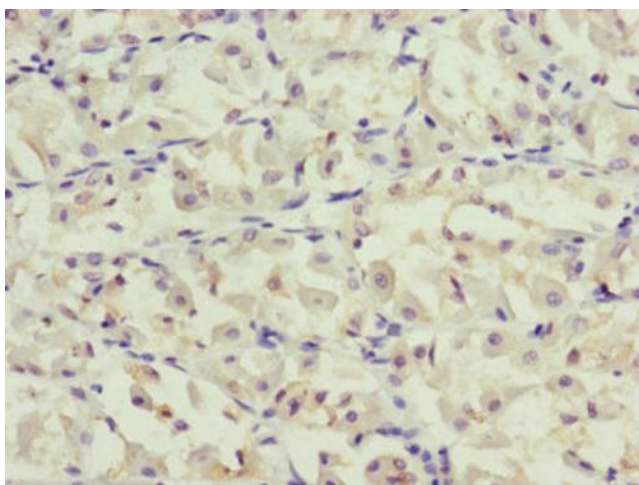


[View online »](#)

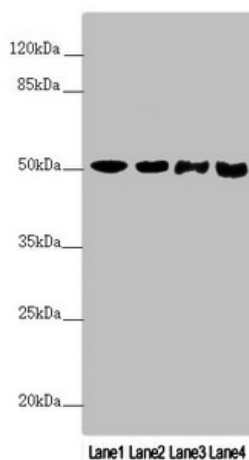
Product images:



Immunohistochemistry of paraffin-embedded human brain tissue using [TA386785] at dilution of 1:100



Immunohistochemistry of paraffin-embedded human gastric cancer using [TA386785] at dilution of 1:100



Western blot

All lanes: PPP2R3C antibody at 3.76µg/ml

Lane 1: Mouse stomach tissue

Lane 2: A431 whole cell lysate

Lane 3: Jurkat whole cell lysate

Lane 4: A549 whole cell lysate

Secondary

Goat polyclonal to rabbit IgG at 1/10000 dilution

Predicted band size: 54, 40 kDa

Observed band size: 54 kDa