

## Product datasheet for **TA386770M**

### LFNG Rabbit Polyclonal Antibody

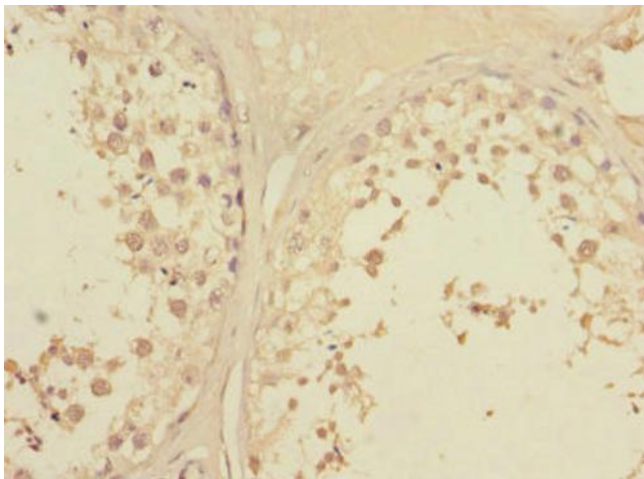
#### Product data:

Product Type:	Primary Antibodies
Applications:	IHC, WB
Recommended Dilution:	Recommended dilution: WB:1:1000-1:5000, IHC:1:20-1:200
Reactivity:	Mouse, Human
Host:	Rabbit
Isotype:	IgG
Clonality:	Polyclonal
Immunogen:	Recombinant Human Beta-1,3-N-acetylglucosaminyltransferase lunatic fringe protein (1-250AA)
Formulation:	PBS with 0.02% sodium azide, 50% glycerol, pH7.3.
Concentration:	lot specific
Purification:	Antigen Affinity Purified
Conjugation:	Unconjugated
Storage:	Upon receipt, store at -20°C or -80°C. Avoid repeated freeze.
Stability:	1 year from dispatch.
Database Link:	<a href="#">Q8NES3</a>
Background:	Glycosyltransferase that initiates the elongation of O-linked fucose residues attached to EGF-like repeats in the extracellular domain of Notch molecules. Decreases the binding of JAGGED1 to NOTCH2 but not that of DELTA1. Essential mediator of somite segmentation and patterning (By similarity).

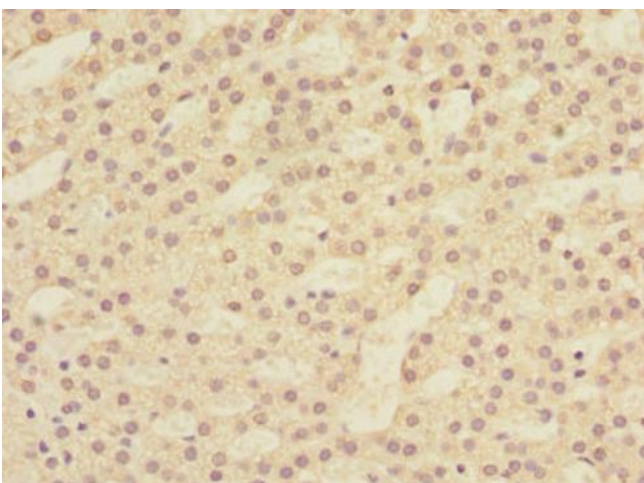


[View online »](#)

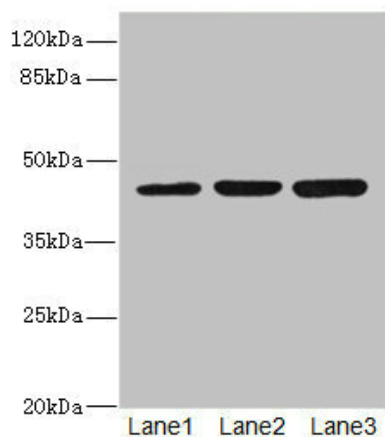
## Product images:



Immunohistochemistry of paraffin-embedded human testis tissue using [TA386770] at dilution of 1:100



Immunohistochemistry of paraffin-embedded human adrenal gland tissue using [TA386770] at dilution of 1:100



Western blot

All lanes: LFNGantibody at 4.43µg/ml

Lane 1: Mouse spleen tissue

Lane 2: K562 whole cell lysate

Lane 3: HL60 whole cell lysate

Secondary

Goat polyclonal to rabbit IgG at 1/10000 dilution

Predicted band size: 42, 29, 40, 36 kDa

Observed band size: 42 kDa