

## Product datasheet for **TA386769M**

### TSEN2 Rabbit Polyclonal Antibody

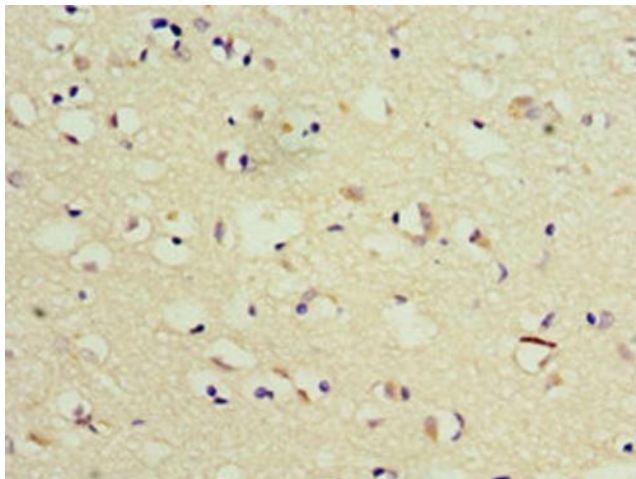
#### Product data:

Product Type:	Primary Antibodies
Applications:	IHC, WB
Recommended Dilution:	Recommended dilution: WB:1:200-1:1000, IHC:1:50-1:200
Reactivity:	Human
Host:	Rabbit
Isotype:	IgG
Clonality:	Polyclonal
Immunogen:	Recombinant Human tRNA-splicing endonuclease subunit Sen2 protein (1-220AA)
Formulation:	PBS with 0.02% sodium azide, 50% glycerol, pH7.3.
Concentration:	lot specific
Purification:	Antigen Affinity Purified
Conjugation:	Unconjugated
Storage:	Upon receipt, store at -20°C or -80°C. Avoid repeated freeze.
Stability:	1 year from dispatch.
Database Link:	<a href="#">Q8NCE0</a>
Background:	Constitutes one of the two catalytic subunit of the tRNA-splicing endonuclease complex, a complex responsible for identification and cleavage of the splice sites in pre-tRNA. It cleaves pre-tRNA at the 5'- and 3'-splice sites to release the intron. The products are an intron and two tRNA half-molecules bearing 2',3'-cyclic phosphate and 5'-OH termini. There are no conserved sequences at the splice sites, but the intron is invariably located at the same site in the gene, placing the splice sites an invariant distance from the constant structural features of the tRNA body. Isoform 1 probably carries the active site for 5'-splice site cleavage. The tRNA splicing endonuclease is also involved in mRNA processing via its association with pre-mRNA 3'-end processing factors, establishing a link between pre-tRNA splicing and pre-mRNA 3'-end formation, suggesting that the endonuclease subunits function in multiple RNA-processing events. Isoform 2 is responsible for processing a yet unknown RNA substrate. The complex containing isoform 2 is not able to cleave pre-tRNAs properly, although it retains endonucleolytic activity.

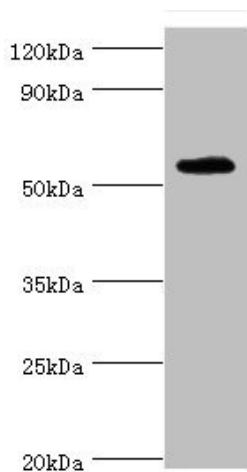


[View online »](#)

## Product images:



Immunohistochemistry of paraffin-embedded human brain tissue using [TA386769] at dilution of 1:100



Western blot  
All lanes: TSEN2 antibody at 5µg/ml + 293T whole cell lysate  
Secondary  
Goat polyclonal to rabbit IgG at 1/10000 dilution  
Predicted band size: 54, 52, 50, 48, 46 kDa  
Observed band size: 54 kDa