

## Product datasheet for **TA386761**

### LDHD Rabbit Polyclonal Antibody

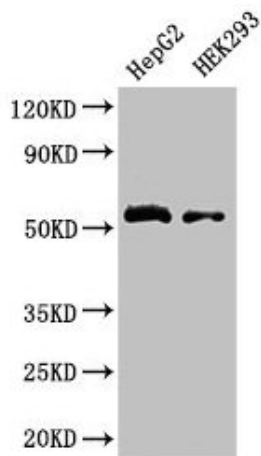
#### Product data:

Product Type:	Primary Antibodies
Applications:	IF, IHC, WB
Recommended Dilution:	Recommended dilution: WB:1:500-1:5000, IHC:1:20-1:200, IF:1:50-1:200
Reactivity:	Human
Host:	Rabbit
Isotype:	IgG
Clonality:	Polyclonal
Immunogen:	Recombinant Human Probable D-lactate dehydrogenase, mitochondrial protein (310-507AA)
Formulation:	Preservative: 0.03% Proclin 300 Constituents: 50% Glycerol, 0.01M PBS, PH 7.4
Concentration:	lot specific
Purification:	>95%, Protein G purified
Conjugation:	Unconjugated
Storage:	Upon receipt, store at -20°C or -80°C. Avoid repeated freeze.
Stability:	1 year from dispatch.
Database Link:	<a href="#">Q86WU2</a>
Background:	mitochondrion



[View online »](#)

## Product images:



## Western Blot

Positive WB detected in: HepG2 whole cell lysate,  
HEK293 whole cell lysate

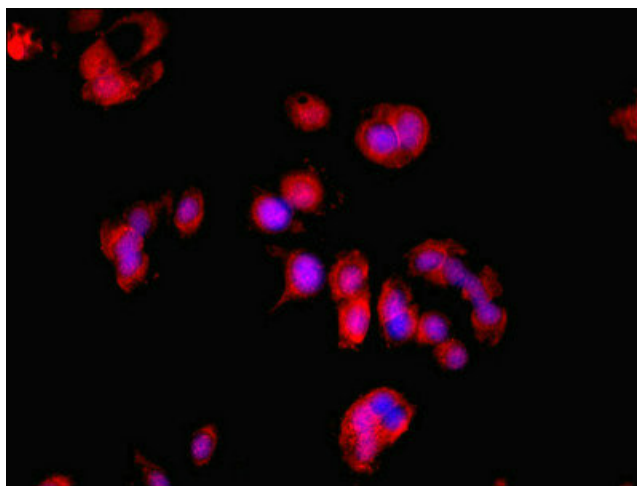
All lanes: LDHD antibody at 3.2µg/ml

Secondary

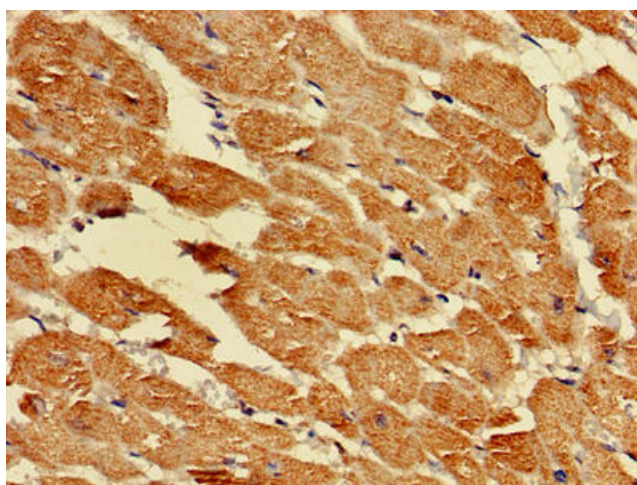
Goat polyclonal to rabbit IgG at 1/50000 dilution

Predicted band size: 55, 53 kDa

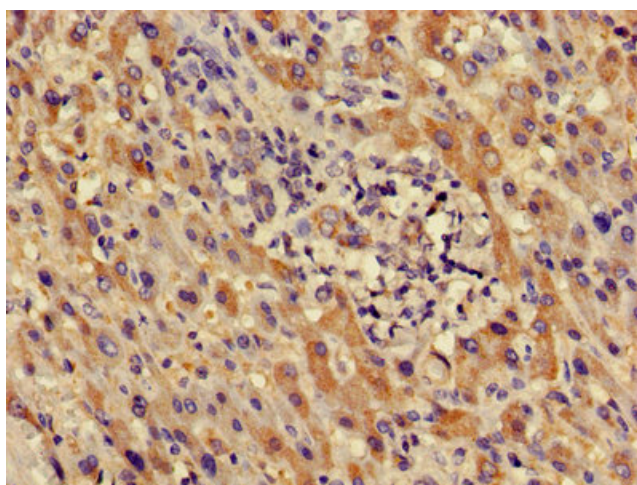
Observed band size: 55 kDa



Immunofluorescent analysis of MCF-7 cells using  
TA386761 at dilution of 1:100 and Cy3-  
conjugated Goat Anti-Rabbit IgG



Immunohistochemistry of paraffin-embedded human heart tissue using TA386761 at dilution of 1:100



Immunohistochemistry of paraffin-embedded human liver cancer using TA386761 at dilution of 1:100