

Product datasheet for **TA386751M**

CWF19L1 Rabbit Polyclonal Antibody

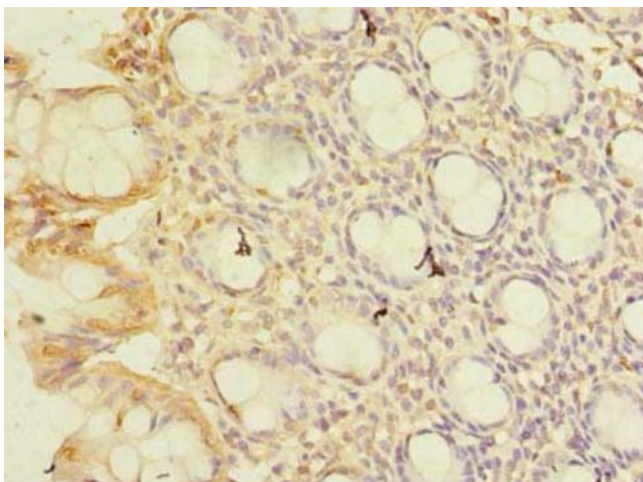
Product data:

Product Type:	Primary Antibodies
Applications:	IHC, WB
Recommended Dilution:	Recommended dilution: WB:1:500-1:2000, IHC:1:20-1:200
Reactivity:	Human
Host:	Rabbit
Isotype:	IgG
Clonality:	Polyclonal
Immunogen:	Recombinant Human CWF19-like protein 1 protein (101-330AA)
Formulation:	Preservative: 0.03% Proclin 300 Constituents: 50% Glycerol, 0.01M PBS, PH 7.4
Concentration:	lot specific
Purification:	>95%, Protein G purified
Conjugation:	Unconjugated
Storage:	Upon receipt, store at -20°C or -80°C. Avoid repeated freeze.
Stability:	1 year from dispatch.
Database Link:	Q69YN2

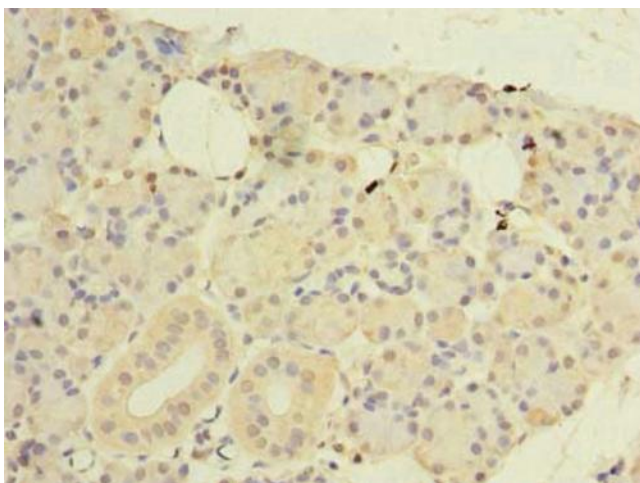


[View online »](#)

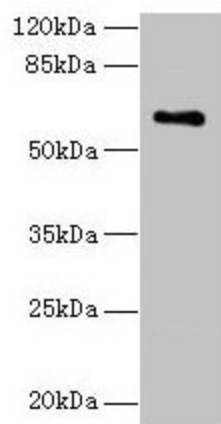
Product images:



Immunohistochemistry of paraffin-embedded human colon tissue using [TA386751] at dilution of 1:100



Immunohistochemistry of paraffin-embedded human pancreatic tissue using [TA386751] at dilution of 1:100



Western blot

All lanes: CWF19L1 antibody at 4 μ g/ml + Raji whole cell lysate

Secondary

Goat polyclonal to rabbit IgG at 1/10000 dilution

Predicted band size: 61, 28, 46 kDa

Observed band size: 61 kDa