

Product datasheet for **TA386743M**

DUSP7 Rabbit Polyclonal Antibody

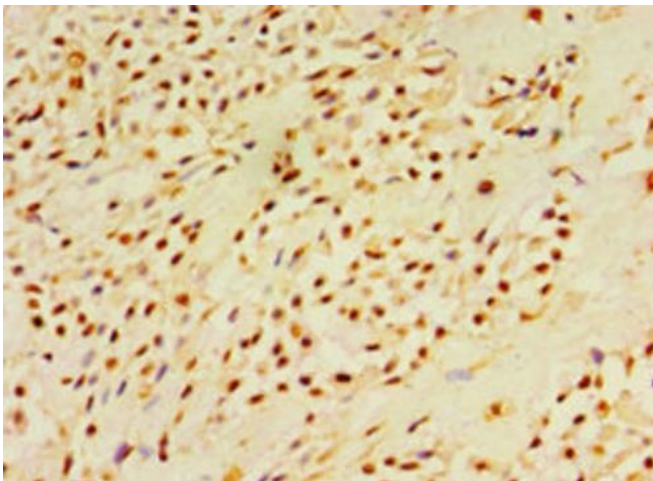
Product data:

Product Type:	Primary Antibodies
Applications:	IHC, WB
Recommended Dilution:	Recommended dilution: WB:1:500-1:2000, IHC:1:20-1:200
Reactivity:	Human
Host:	Rabbit
Isotype:	IgG
Clonality:	Polyclonal
Immunogen:	Recombinant Human Dual specificity protein phosphatase 7 protein (160-419AA)
Formulation:	PBS with 0.02% sodium azide, 50% glycerol, pH7.3.
Concentration:	lot specific
Purification:	Antigen Affinity Purified
Conjugation:	Unconjugated
Storage:	Upon receipt, store at -20°C or -80°C. Avoid repeated freeze.
Stability:	1 year from dispatch.
Database Link:	Q16829
Background:	Regulates the activity of the MAP kinase family in response to changes in the cellular environment. PYST2-S may act as a negative regulator of PYST2-L although it is unclear whether this is by competing for transcription, translation or activation factors.

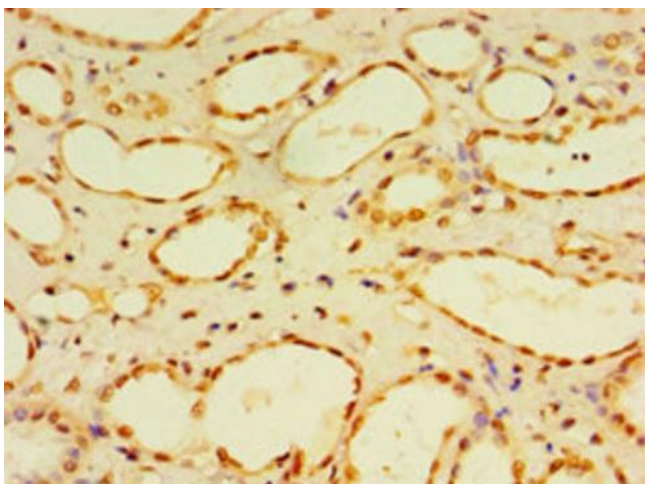


[View online »](#)

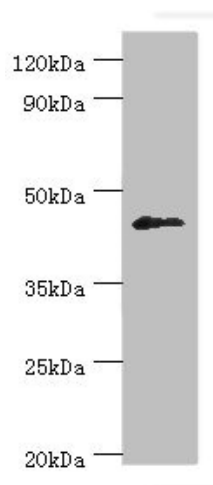
Product images:



Immunohistochemistry of paraffin-embedded human breast cancer using [TA386743] at dilution of 1:100



Immunohistochemistry of paraffin-embedded human kidney tissue using [TA386743] at dilution of 1:100



Western blot

All lanes: Dual specificity protein phosphatase 7 antibody at 10 μ g/ml + HepG2 whole cell lysate
Secondary

Goat polyclonal to rabbit IgG at 1/10000 dilution

Predicted band size: 45, 41 kDa

Observed band size: 45 kDa