

## Product datasheet for **TA386735**

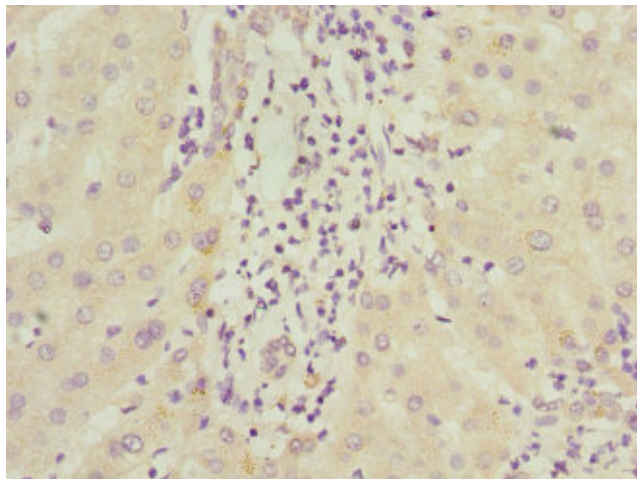
### ICAM4 Rabbit Polyclonal Antibody

#### Product data:

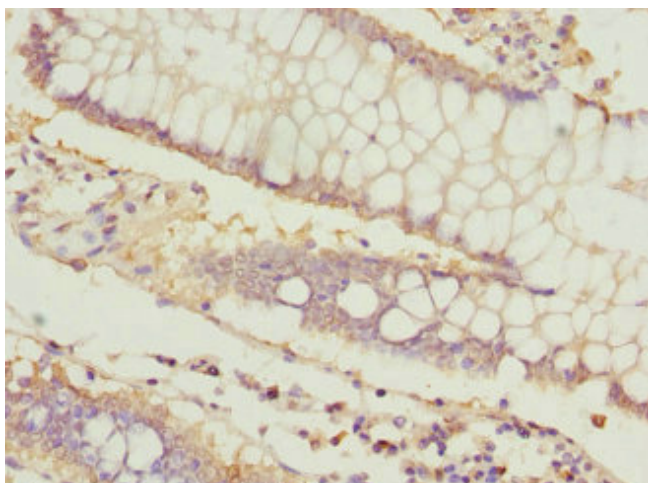
Product Type:	Primary Antibodies
Applications:	IHC, WB
Recommended Dilution:	Recommended dilution: WB:1:1000-1:5000, IHC:1:20-1:200
Reactivity:	Mouse, Human
Host:	Rabbit
Isotype:	IgG
Clonality:	Polyclonal
Immunogen:	Recombinant Human Intercellular adhesion molecule 4 protein (20-140AA)
Formulation:	PBS with 0.02% sodium azide, 50% glycerol, pH7.3.
Concentration:	lot specific
Purification:	Antigen Affinity Purified
Conjugation:	Unconjugated
Storage:	Upon receipt, store at -20°C or -80°C. Avoid repeated freeze.
Stability:	1 year from dispatch.
Database Link:	<a href="#">Q14773</a>
Background:	ICAM proteins are ligands for the leukocyte adhesion protein LFA-1 (integrin alpha-L/beta-2). ICAM4 is also a ligand for alpha-4/beta-1 and alpha-V integrins.



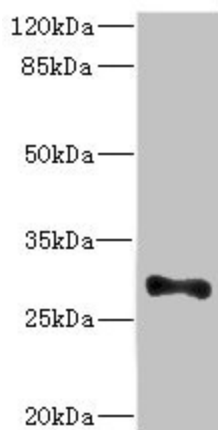
[View online »](#)

**Product images:**

Immunohistochemistry of paraffin-embedded human liver cancer using TA386735 at dilution of 1:100



Immunohistochemistry of paraffin-embedded human colon cancer using TA386735 at dilution of 1:100



Western blot  
All lanes: ICAM4 antibody at 4.98 $\mu$ g/ml + Mouse  
brain tissue  
Secondary  
Goat polyclonal to rabbit IgG at 1/10000 dilution  
Predicted band size: 30, 26 kDa  
Observed band size: 30 kDa