

## Product datasheet for **TA386724**

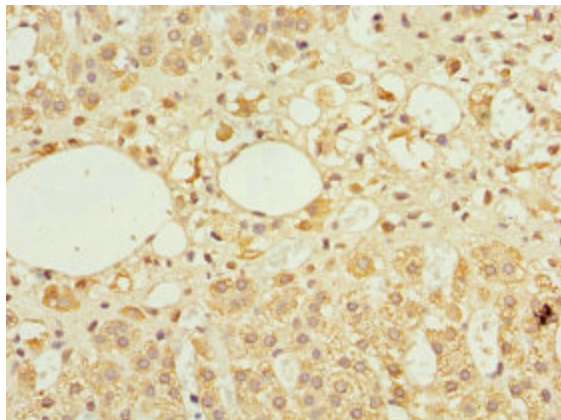
### TFCP2 Rabbit Polyclonal Antibody

#### Product data:

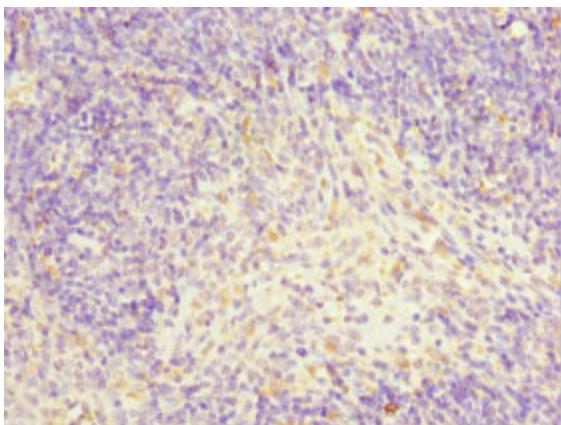
Product Type:	Primary Antibodies
Applications:	IHC, WB
Recommended Dilution:	Recommended dilution: WB:1:1000-1:5000, IHC:1:20-1:200
Reactivity:	Human
Host:	Rabbit
Isotype:	IgG
Clonality:	Polyclonal
Immunogen:	Recombinant Human Alpha-globin transcription factor CP2 protein (1-280AA)
Formulation:	PBS with 0.02% sodium azide, 50% glycerol, pH7.3.
Concentration:	lot specific
Purification:	Antigen Affinity Purified
Conjugation:	Unconjugated
Storage:	Upon receipt, store at -20°C or -80°C. Avoid repeated freeze.
Stability:	1 year from dispatch.
Database Link:	<a href="#">Q12800</a>
Background:	Binds a variety of cellular and viral promoters including fibrinogen, alpha-globin, SV40 and HIV-1 promoters. Activation of the alpha-globin promoter in erythroid cells is via synergistic interaction with UBP1 (By similarity). Functions as part of the SSP (stage selector protein) complex. Facilitates the interaction of the gamma-globin genes with enhancer elements contained in the locus control region in fetal erythroid cells. Interacts by binding to the stage selector element (SSE) in the proximal gamma-globin promoter.



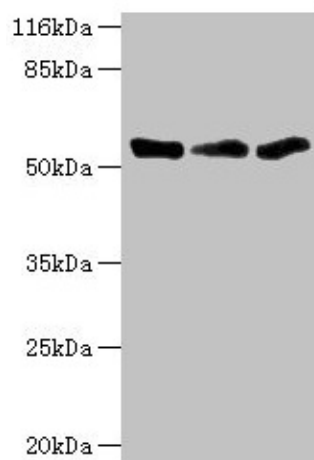
[View online »](#)

**Product images:**

Immunohistochemistry of paraffin-embedded human adrenal gland tissue using TA386724 at dilution of 1:100



Immunohistochemistry of paraffin-embedded human thymus tissue using TA386724 at dilution of 1:100

**Western blot**

All lanes: TFCP2 antibody at 1.34 $\mu$ g/ml

Lane 1: K562 whole cell lysate

Lane 2: Mouse spleen tissue

Lane 3: THP-1 whole cell lysate

Secondary

Goat polyclonal to rabbit IgG at 1/10000 dilution

Predicted band size: 58, 52 kDa

Observed band size: 52 kDa