

## Product datasheet for **TA386714M**

### RRAS2 Rabbit Polyclonal Antibody

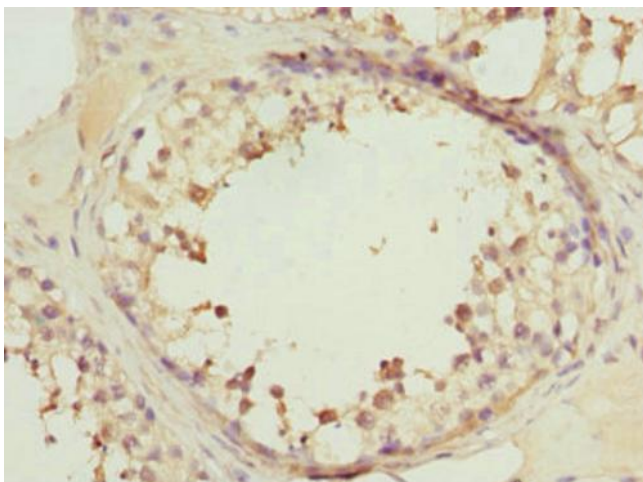
#### Product data:

Product Type:	Primary Antibodies
Applications:	IHC, WB
Recommended Dilution:	Recommended dilution: WB:1:1000-1:5000, IHC:1:20-1:200
Reactivity:	Mouse, Human
Host:	Rabbit
Isotype:	IgG
Clonality:	Polyclonal
Immunogen:	Recombinant Human Ras-related protein R-Ras2 protein (1-204AA)
Formulation:	PBS with 0.02% sodium azide, 50% glycerol, pH7.3.
Concentration:	lot specific
Purification:	Antigen Affinity Purified
Conjugation:	Unconjugated
Storage:	Upon receipt, store at -20°C or -80°C. Avoid repeated freeze.
Stability:	1 year from dispatch.
Database Link:	<a href="#">P62070</a>
Background:	It is a plasma membrane-associated GTP-binding protein with GTPase activity. Might transduce growth inhibitory signals across the cell membrane, exerting its effect through an effector shared with the Ras proteins but in an antagonistic fashion.

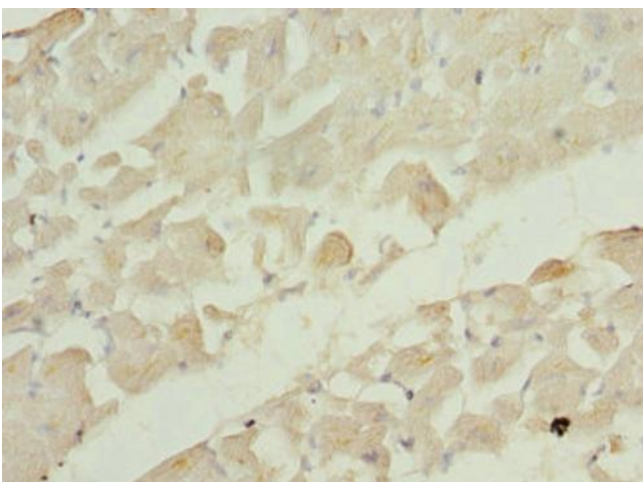


[View online »](#)

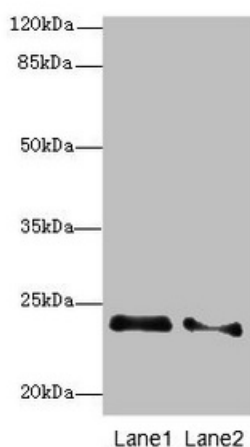
**Product images:**



Immunohistochemistry of paraffin-embedded human testis tissue using [TA386714] at dilution of 1:100



Immunohistochemistry of paraffin-embedded human heart tissue using [TA386714] at dilution of 1:100



#### Western blot

All lanes: RRAS2 antibody at 2.66µg/ml

Lane 1: NIH/3T3 whole cell lysate

Lane 2: A431 whole cell lysate

Secondary

Goat polyclonal to rabbit IgG at 1/10000 dilution

Predicted band size: 24, 16, 20, 25 kDa

Observed band size: 24 kDa