

## Product datasheet for **TA386713**

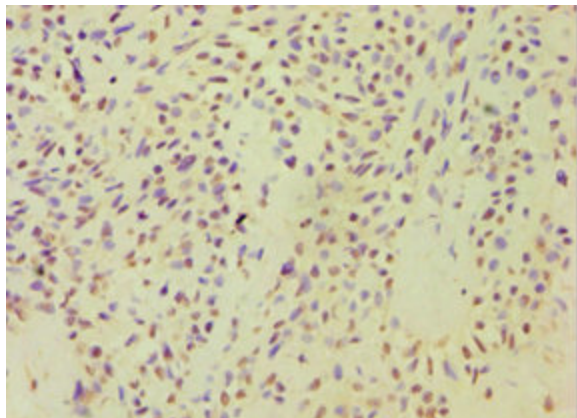
### ARF3 Rabbit Polyclonal Antibody

#### Product data:

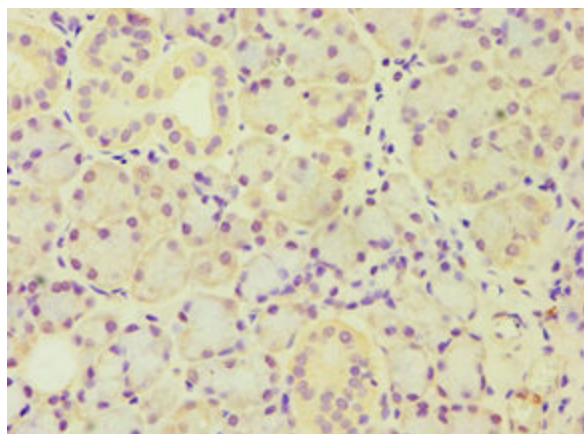
Product Type:	Primary Antibodies
Applications:	IHC, WB
Recommended Dilution:	Recommended dilution: WB:1:500-1:2000, IHC:1:20-1:200
Reactivity:	Mouse, Human
Host:	Rabbit
Isotype:	IgG
Clonality:	Polyclonal
Immunogen:	Recombinant Human ADP-ribosylation factor 3 protein (1-181AA)
Formulation:	PBS with 0.02% sodium azide, 50% glycerol, pH7.3.
Concentration:	lot specific
Purification:	Antigen Affinity Purified
Conjugation:	Unconjugated
Storage:	Upon receipt, store at -20°C or -80°C. Avoid repeated freeze.
Stability:	1 year from dispatch.
Database Link:	<a href="#">P61204</a>
Background:	GTP-binding protein that functions as an allosteric activator of the cholera toxin catalytic subunit, an ADP-ribosyltransferase. Involved in protein trafficking; may modulate vesicle budding and uncoating within the Golgi apparatus.



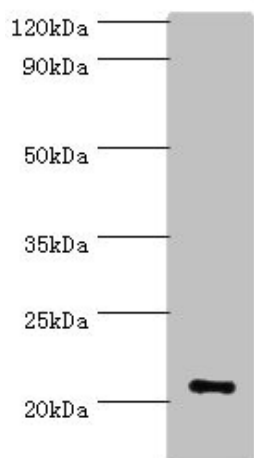
[View online »](#)

**Product images:**

Immunohistochemistry of paraffin-embedded human breast cancer using TA386713 at dilution of 1:100



Immunohistochemistry of paraffin-embedded human pancreatic tissue using TA386713 at dilution of 1:100



Western blot

All lanes: ARF3 antibody at 6 $\mu$ g/ml + Mouse brain tissue

Secondary

Goat polyclonal to rabbit IgG at 1/10000 dilution

Predicted band size: 21, 17 kDa

Observed band size: 21 kDa