

## Product datasheet for **TA386712M**

### PLP1 Rabbit Polyclonal Antibody

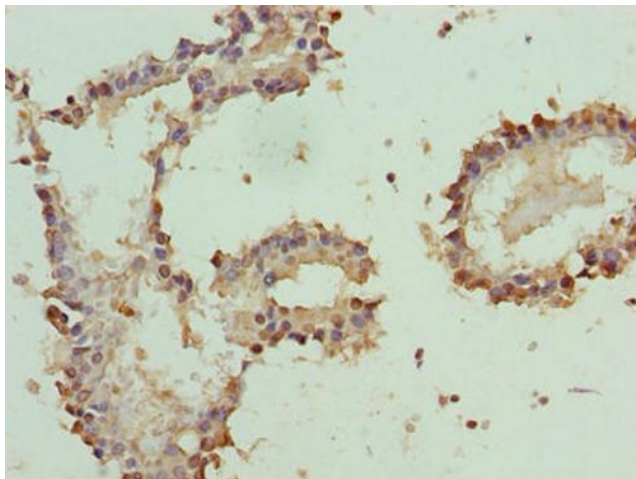
#### Product data:

Product Type:	Primary Antibodies
Applications:	IF, IHC, WB
Recommended Dilution:	Recommended dilution: WB:1:500-1:2000, IHC:1:20-1:200, IF:1:50-1:200
Reactivity:	Human
Host:	Rabbit
Isotype:	IgG
Clonality:	Polyclonal
Immunogen:	Recombinant Human Myelin proteolipid protein (143-197AA)
Formulation:	Preservative: 0.03% Proclin 300 Constituents: 50% Glycerol, 0.01M PBS, PH 7.4
Concentration:	lot specific
Purification:	>95%, Protein G purified
Conjugation:	Unconjugated
Storage:	Upon receipt, store at -20°C or -80°C. Avoid repeated freeze.
Stability:	1 year from dispatch.
Database Link:	<a href="#">P60201</a>
Background:	This is the major myelin protein from the central nervous system. It plays an important role in the formation or maintenance of the multilamellar structure of myelin.

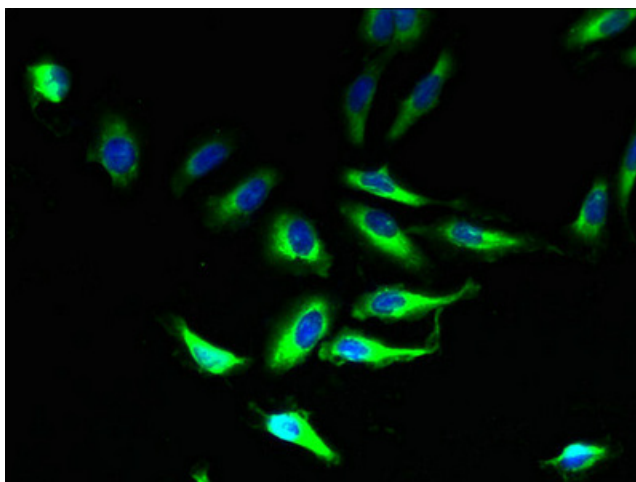


[View online »](#)

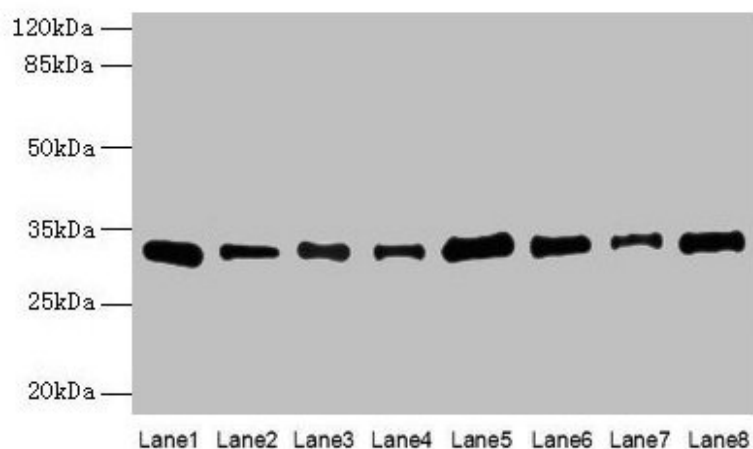
## Product images:



Immunohistochemistry of paraffin-embedded human breast cancer using [TA386712] at dilution of 1:100



Immunofluorescent analysis of HeLa cells using [TA386712] at dilution of 1:100 and Alexa Fluor 488-conjugated AffiniPure Goat Anti-Rabbit IgG(H+L)



#### Western blot

All lanes: PLP1 antibody at 4 $\mu$ g/ml

Lane 1: Hela whole cell lysate

Lane 2: HL60 whole cell lysate

Lane 3: K562 whole cell lysate

Lane 4: THP-1 whole cell lysate

Lane 5: U937 whole cell lysate

Lane 6: A549 whole cell lysate

Lane 7: Caco-2 whole cell lysate

Lane 8: HepG2 whole cell lysate

#### Secondary

Goat polyclonal to rabbit IgG at 1/10000 dilution

Predicted band size: 31, 27 kDa

Observed band size: 31 kDa