

## Product datasheet for **TA386700M**

### SLC1A6 Rabbit Polyclonal Antibody

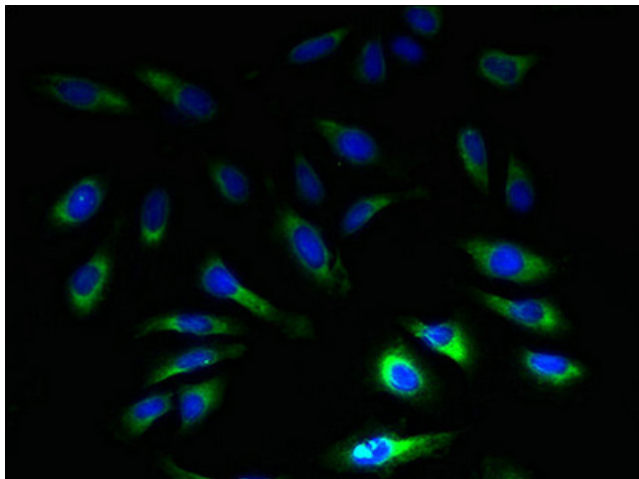
#### Product data:

Product Type:	Primary Antibodies
Applications:	IF, IHC, WB
Recommended Dilution:	Recommended dilution: WB:1:1000-1:5000, IHC:1:20-1:200, IF:1:50-1:200
Reactivity:	Human
Host:	Rabbit
Isotype:	IgG
Clonality:	Polyclonal
Immunogen:	Recombinant Human Excitatory amino acid transporter 4 protein (149-271AA)
Formulation:	Preservative: 0.03% Proclin 300 Constituents: 50% Glycerol, 0.01M PBS, PH 7.4
Concentration:	lot specific
Purification:	>95%, Protein G purified
Conjugation:	Unconjugated
Storage:	Upon receipt, store at -20°C or -80°C. Avoid repeated freeze.
Stability:	1 year from dispatch.
Database Link:	<a href="#">P48664</a>
Background:	Transports L-glutamate and also L- and D-aspartate. Seems to act as a symport by cotransporting sodium.

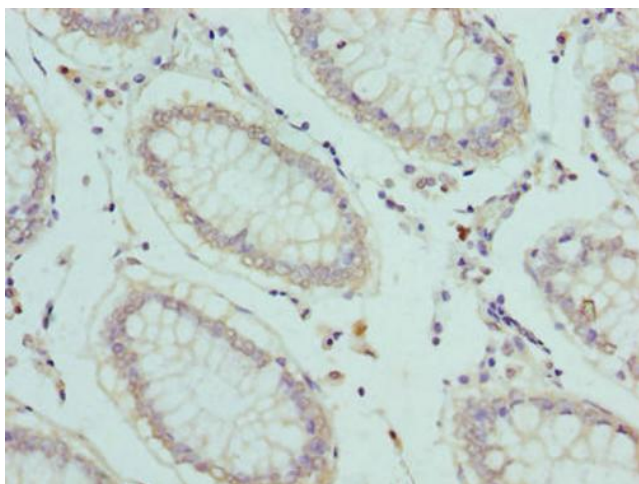


[View online »](#)

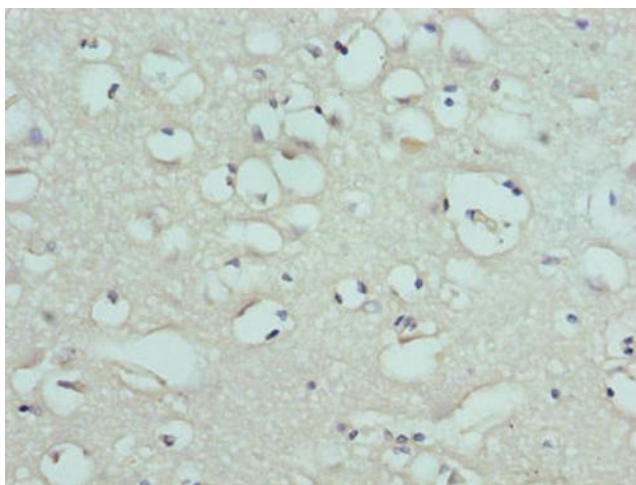
## Product images:



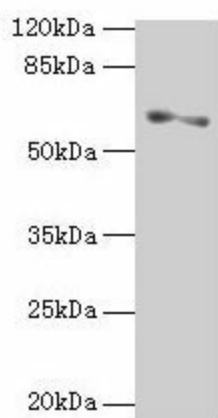
Immunofluorescent analysis of HeLa cells using [TA386700] at dilution of 1:100 and Alexa Fluor 488-conjugated AffiniPure Goat Anti-Rabbit IgG(H+L)



Immunohistochemistry of paraffin-embedded human colon cancer using [TA386700] at dilution of 1:100



Immunohistochemistry of paraffin-embedded human brain tissue using [TA386700] at dilution of 1:100



Western blot  
All lanes: SLC1A6 antibody at 2 $\mu$ g/ml + A375 whole cell lysate  
Secondary  
Goat polyclonal to rabbit IgG at 1/10000 dilution  
Predicted band size: 62, 35 kDa  
Observed band size: 62 kDa