

## Product datasheet for **TA386698**

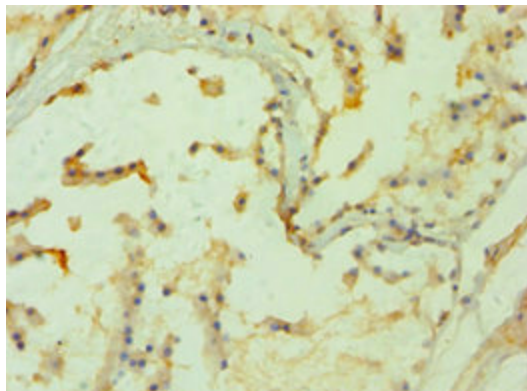
### PPP3CC Rabbit Polyclonal Antibody

#### Product data:

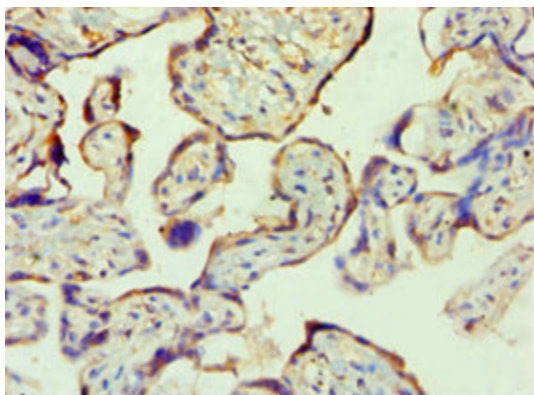
Product Type:	Primary Antibodies
Applications:	IHC, WB
Recommended Dilution:	Recommended dilution: WB:1:200-1:1000, IHC:1:20-1:200
Reactivity:	Rat, Human
Host:	Rabbit
Isotype:	IgG
Clonality:	Polyclonal
Immunogen:	Recombinant Human Serine/threonine-protein phosphatase 2B catalytic subunit gamma isoform protein (373-512AA)
Formulation:	PBS with 0.02% sodium azide, 50% glycerol, pH7.3.
Concentration:	lot specific
Purification:	Antigen Affinity Purified
Conjugation:	Unconjugated
Storage:	Upon receipt, store at -20°C or -80°C. Avoid repeated freeze.
Stability:	1 year from dispatch.
Database Link:	<a href="#">P48454</a>
Background:	Calcium-dependent, calmodulin-stimulated protein phosphatase. This subunit may have a role in the calmodulin activation of calcineurin.



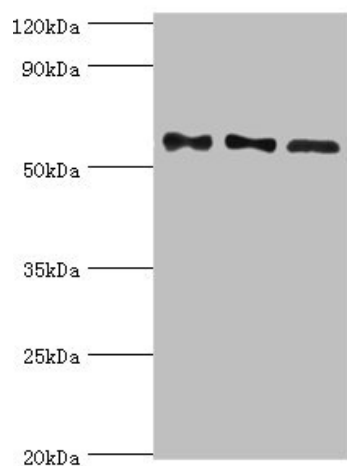
[View online »](#)

**Product images:**

Immunohistochemistry of paraffin-embedded human prostate tissue using TA386698 at dilution of 1:100



Immunohistochemistry of paraffin-embedded human placenta tissue using TA386698 at dilution of 1:100

**Western blot**

All lanes: Serine/threonine-protein phosphatase 2B catalytic subunit gamma isoform antibody at 10 $\mu$ g/ml

Lane 1: Rat brain tissue

Lane 2: MCF-7 whole cell lysate

Lane 3: Rat skeletal muscle tissue

Secondary

Goat polyclonal to rabbit IgG at 1/10000 dilution

Predicted band size: 59, 58, 60 kDa

Observed band size: 59 kDa