

## Product datasheet for **TA386692M**

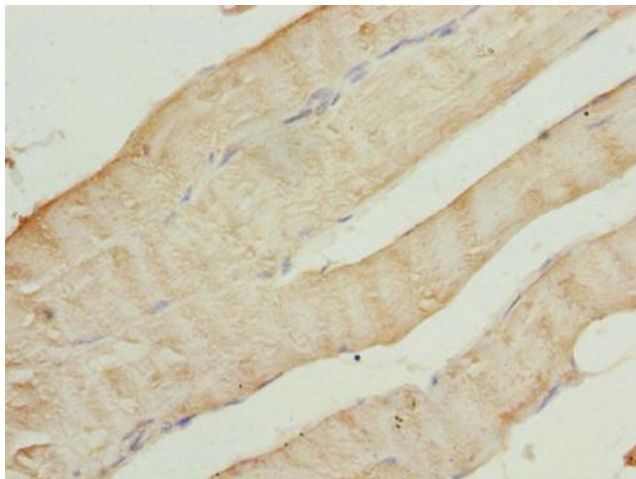
### CAP2 Rabbit Polyclonal Antibody

#### Product data:

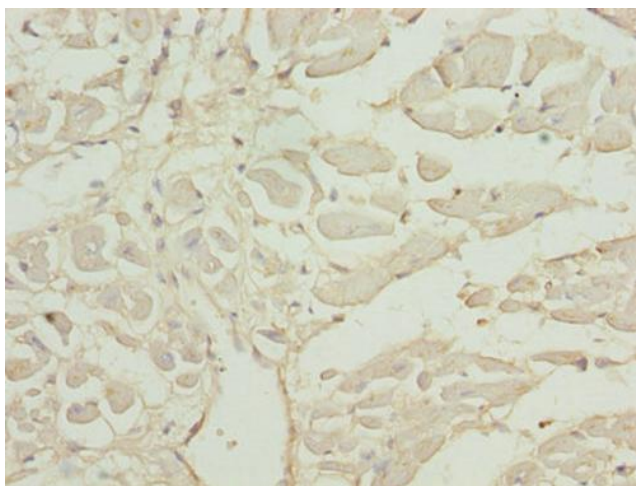
Product Type:	Primary Antibodies
Applications:	IHC, WB
Recommended Dilution:	Recommended dilution: WB:1:1000-1:5000, IHC:1:20-1:200
Reactivity:	Mouse, Human
Host:	Rabbit
Isotype:	IgG
Clonality:	Polyclonal
Immunogen:	Recombinant Human Adenylyl cyclase-associated protein 2 protein (221-477AA)
Formulation:	Preservative: 0.03% Proclin 300 Constituents: 50% Glycerol, 0.01M PBS, PH 7.4
Concentration:	lot specific
Purification:	>95%, Protein G purified
Conjugation:	Unconjugated
Storage:	Upon receipt, store at -20°C or -80°C. Avoid repeated freeze.
Stability:	1 year from dispatch.
Database Link:	<a href="#">P40123</a>
Background:	May have a regulatory bifunctional role.

[View online »](#)

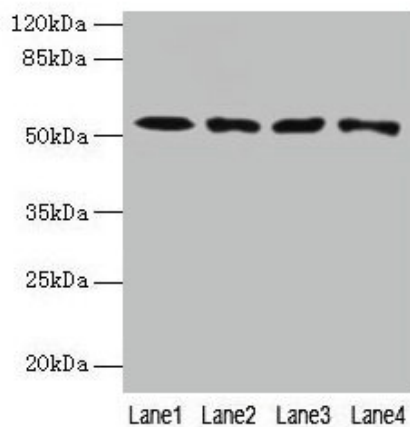
## Product images:



Immunohistochemistry of paraffin-embedded human skeletal muscle tissue using [TA386692] at dilution of 1:100



Immunohistochemistry of paraffin-embedded human heart tissue using [TA386692] at dilution of 1:100



#### Western blot

All lanes: CAP2 antibody at 4µg/ml

Lane 1: HepG2 whole cell lysate

Lane 2: Mouse muscle tissue

Lane 3: Mouse gonadal tissue

Lane 4: Hela whole cell lysate

#### Secondary

Goat polyclonal to rabbit IgG at 1/10000 dilution

Predicted band size: 53, 46, 25 kDa

Observed band size: 53 kDa