

Product datasheet for **TA386690**

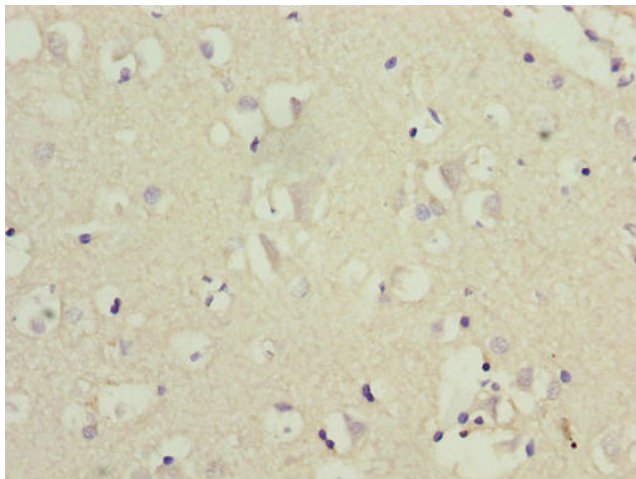
CRHR1 Rabbit Polyclonal Antibody

Product data:

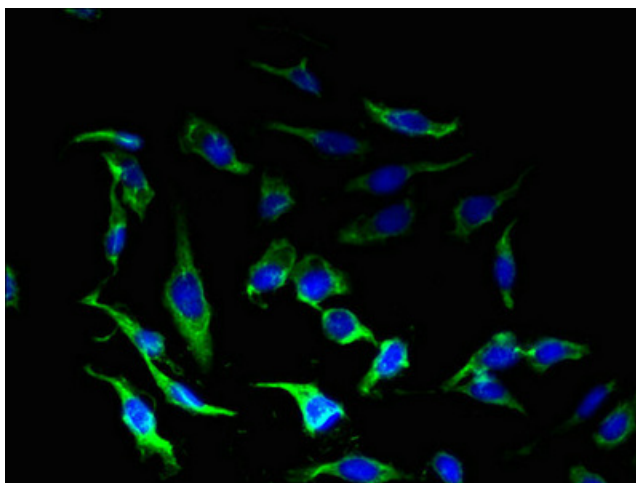
Product Type:	Primary Antibodies
Applications:	IF, IHC, WB
Recommended Dilution:	Recommended dilution: WB:1:500-1:5000, IHC:1:20-1:200, IF:1:50-1:200
Reactivity:	Human
Host:	Rabbit
Isotype:	IgG
Clonality:	Polyclonal
Immunogen:	Recombinant Human Corticotropin-releasing factor receptor 1 protein (24-121AA)
Formulation:	Preservative: 0.03% Proclin 300 Constituents: 50% Glycerol, 0.01M PBS, PH 7.4
Concentration:	lot specific
Purification:	>95%, Protein G purified
Conjugation:	Unconjugated
Storage:	Upon receipt, store at -20°C or -80°C. Avoid repeated freeze.
Stability:	1 year from dispatch.
Database Link:	P34998



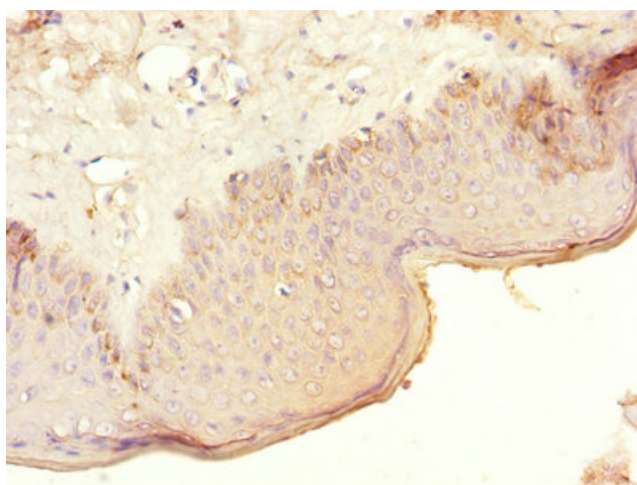
[View online »](#)

Product images:

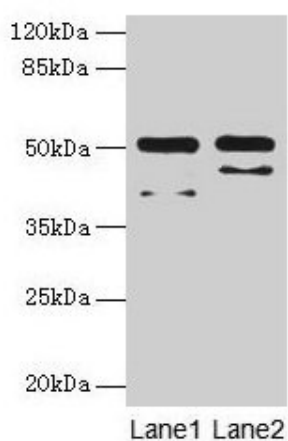
Immunohistochemistry of paraffin-embedded human brain tissue using TA386690 at dilution of 1:100



Immunofluorescent analysis of HeLa cells using TA386690 at dilution of 1:100 and Alexa Fluor 488-conjugated AffiniPure Goat Anti-Rabbit IgG(H+L)



Immunohistochemistry of paraffin-embedded human skin tissue using TA386690 at dilution of 1:100



Western blot
 All lanes: CRHR1 antibody at 16µg/ml
 Lane 1: Hela whole cell lysate
 Lane 2: HL60 whole cell lysate
 Secondary
 Goat polyclonal to rabbit IgG at 1/10000 dilution
 Predicted band size: 51, 48, 44, 47, 29 kDa
 Observed band size: 51 kDa