

## Product datasheet for **TA386687**

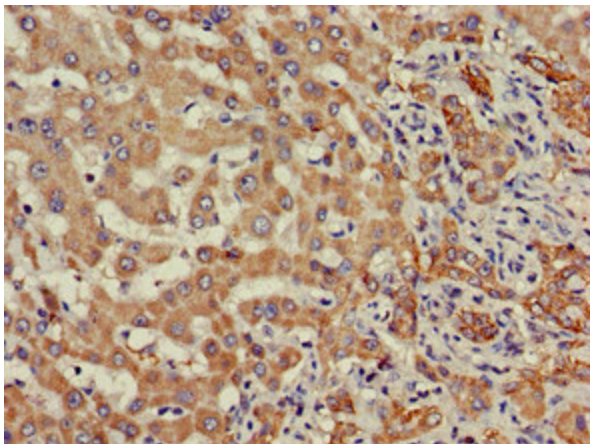
### SDC4 Rabbit Polyclonal Antibody

#### Product data:

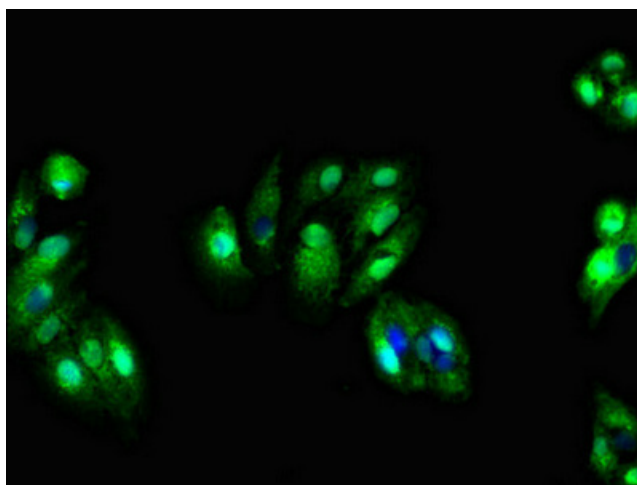
Product Type:	Primary Antibodies
Applications:	IF, IHC, WB
Recommended Dilution:	Recommended dilution: WB:1:500-1:5000, IHC:1:20-1:200, IF:1:50-1:200
Reactivity:	Mouse, Human
Host:	Rabbit
Isotype:	IgG
Clonality:	Polyclonal
Immunogen:	Recombinant Human Syndecan-4 protein (19-145AA)
Formulation:	Preservative: 0.03% Proclin 300 Constituents: 50% Glycerol, 0.01M PBS, pH 7.4
Concentration:	lot specific
Purification:	>95%, Protein G purified
Conjugation:	Unconjugated
Storage:	Upon receipt, store at -20°C or -80°C. Avoid repeated freeze.
Stability:	1 year from dispatch.
Database Link:	<a href="#">P31431</a>
Background:	Cell surface proteoglycan that bears heparan sulfate. Regulates exosome biogenesis in concert with SDCBP and PDCD6IP (PubMed:22660413).



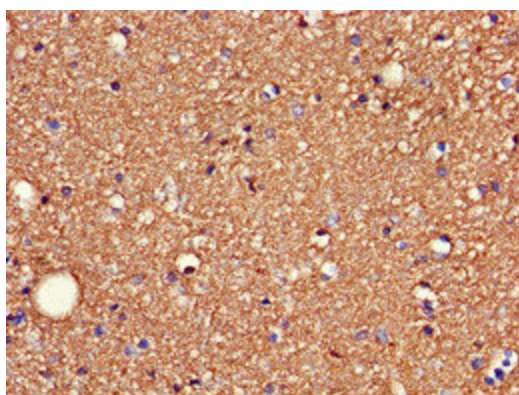
[View online »](#)

**Product images:**

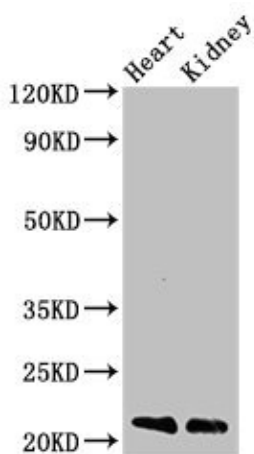
Immunohistochemistry of paraffin-embedded human liver cancer using TA386687 at dilution of 1:100



Immunofluorescent analysis of HepG2 cells using TA386687 at dilution of 1:100 and Alexa Fluor 488-conjugated AffiniPure Goat Anti-Rabbit IgG(H+L)



Immunohistochemistry of paraffin-embedded human brain tissue using TA386687 at dilution of 1:100



Western Blot  
 Positive WB detected in: Mouse heart tissue,  
 Mouse kidney tissue  
 All lanes: SDC4 antibody at 3µg/ml  
 Secondary  
 Goat polyclonal to rabbit IgG at 1/50000 dilution  
 Predicted band size: 22, 17 kDa  
 Observed band size: 22 kDa