

Product datasheet for **TA386681M**

CBLIF Rabbit Polyclonal Antibody

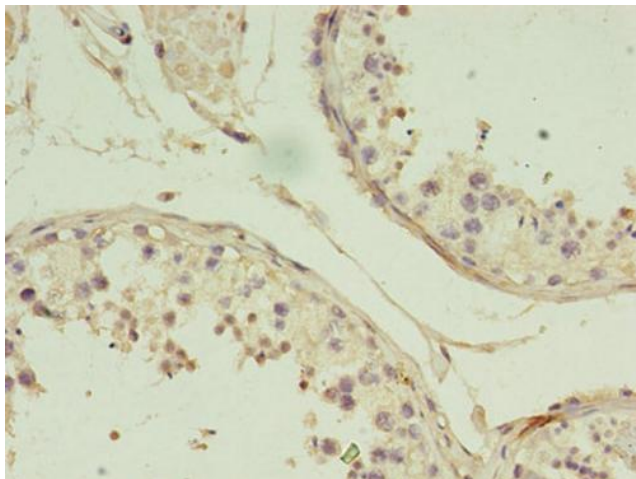
Product data:

Product Type:	Primary Antibodies
Applications:	IHC, WB
Recommended Dilution:	Recommended dilution: WB:1:500-1:5000, IHC:1:20-1:200
Reactivity:	Mouse, Human
Host:	Rabbit
Isotype:	IgG
Clonality:	Polyclonal
Immunogen:	Recombinant Human Cobalamin binding intrinsic factor protein (19-417AA)
Formulation:	Preservative: 0.03% Proclin 300 Constituents: 50% Glycerol, 0.01M PBS, PH 7.4
Concentration:	lot specific
Purification:	>95%, Protein G purified
Conjugation:	Unconjugated
Storage:	Upon receipt, store at -20°C or -80°C. Avoid repeated freeze.
Stability:	1 year from dispatch.
Database Link:	P27352
Background:	Promotes absorption of the essential vitamin cobalamin (Cbl) in the ileum. After interaction with CUBN, the CBLIF-cobalamin complex is internalized via receptor-mediated endocytosis.

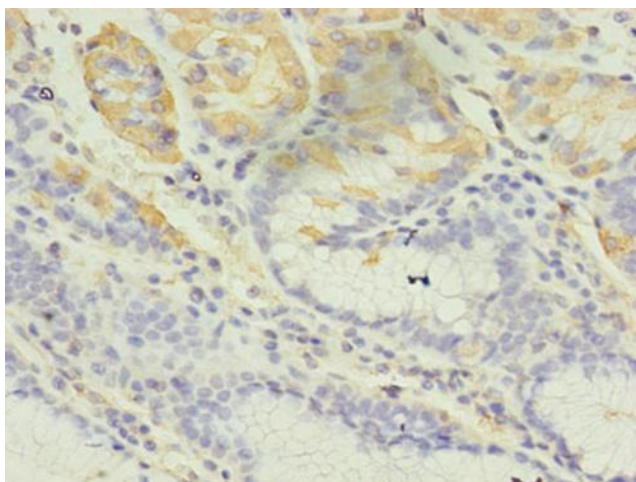


[View online »](#)

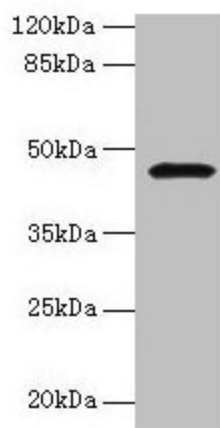
Product images:



Immunohistochemistry of paraffin-embedded human testis tissue using [TA386681] at dilution of 1:100



Immunohistochemistry of paraffin-embedded human gastric cancer using [TA386681] at dilution of 1:100



Western blot
 All lanes: CBLIF antibody at 2 μ g/ml + Mouse stomach tissue
 Secondary
 Goat polyclonal to rabbit IgG at 1/10000 dilution
 Predicted band size: 46, 43 kDa
 Observed band size: 46 kDa