

Product datasheet for **TA386680M**

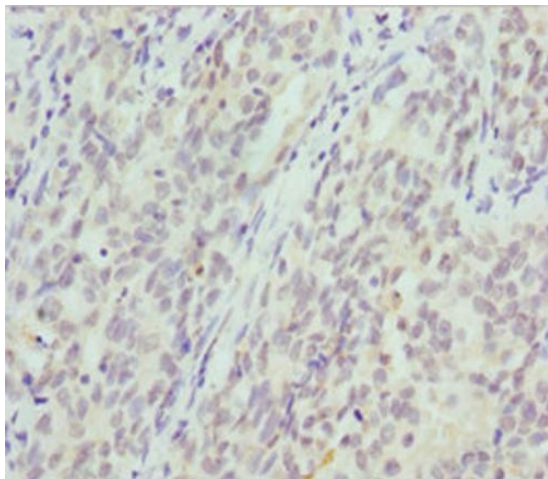
CRYGS Rabbit Polyclonal Antibody

Product data:

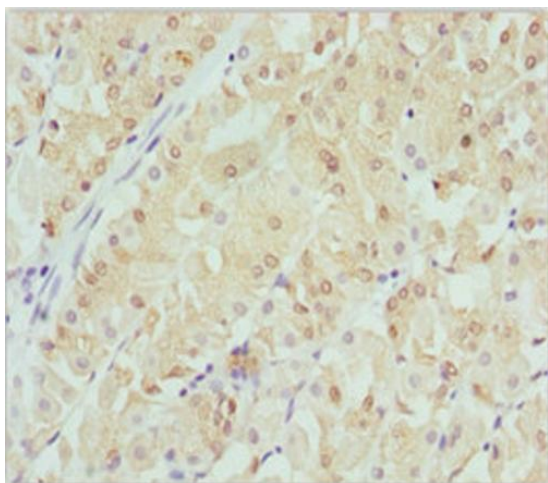
Product Type:	Primary Antibodies
Applications:	IHC, WB
Recommended Dilution:	Recommended dilution: WB:1:1000-1:5000, IHC:1:20-1:200
Reactivity:	Mouse, Human
Host:	Rabbit
Isotype:	IgG
Clonality:	Polyclonal
Immunogen:	Recombinant Human Beta-crystallin S protein (1-178AA)
Formulation:	PBS with 0.02% sodium azide, 50% glycerol, pH7.3.
Concentration:	lot specific
Purification:	Antigen Affinity Purified
Conjugation:	Unconjugated
Storage:	Upon receipt, store at -20°C or -80°C. Avoid repeated freeze.
Stability:	1 year from dispatch.
Database Link:	P22914
Background:	Crystallins are the dominant structural components of the vertebrate eye lens.



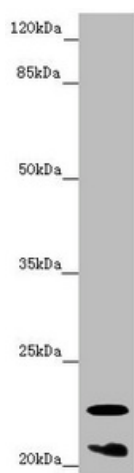
[View online »](#)

Product images:

Immunohistochemistry of paraffin-embedded human lung cancer using [TA386680] at dilution of 1:100



Immunohistochemistry of paraffin-embedded human gastric cancer using [TA386680] at dilution of 1:100



Western blot

All lanes: CRYGS antibody at 6.87 µg/ml + Mouse eye tissue

Secondary

Goat polyclonal to rabbit IgG at 1/10000 dilution

Predicted band size: 21 kDa

Observed band size: 21, 23 kDa