

## Product datasheet for **TA386676**

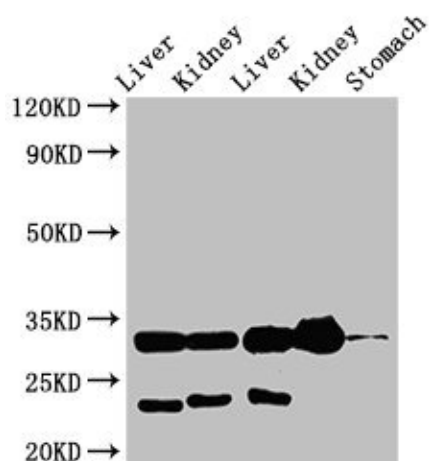
### TPSB2 Rabbit Polyclonal Antibody

#### Product data:

Product Type:	Primary Antibodies
Applications:	IHC, WB
Recommended Dilution:	Recommended dilution: WB:1:500-1:5000, IHC:1:20-1:200
Reactivity:	Mouse, Rat, Human
Host:	Rabbit
Isotype:	IgG
Clonality:	Polyclonal
Immunogen:	Recombinant Human Tryptase beta-2 protein (31-275AA)
Formulation:	Preservative: 0.03% Proclin 300 Constituents: 50% Glycerol, 0.01M PBS, PH 7.4
Concentration:	lot specific
Purification:	>95%, Protein G purified
Conjugation:	Unconjugated
Storage:	Upon receipt, store at -20°C or -80°C. Avoid repeated freeze.
Stability:	1 year from dispatch.
Database Link:	<a href="#">P20231</a>
Background:	Tryptase is the major neutral protease present in mast cells and is secreted upon the coupled activation-degranulation response of this cell type. May play a role in innate immunity.



[View online »](#)

**Product images:****Western Blot**

Positive WB detected in: Rat liver tissue, Rat kidney tissue, Mouse liver tissue, Mouse kidney tissue, Mouse stomach tissue

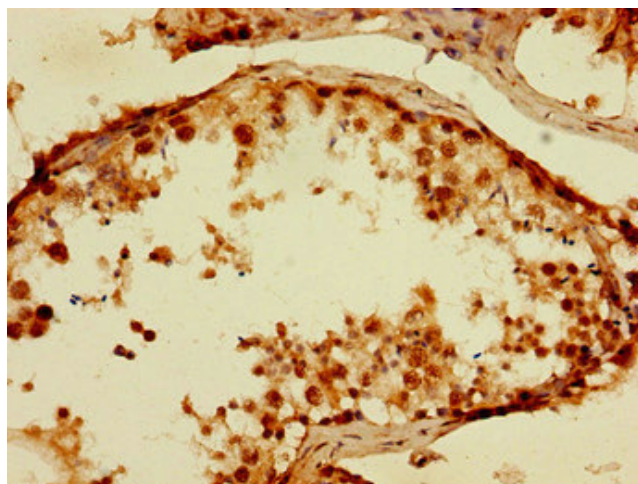
All lanes: TPSB2 antibody at 3 $\mu$ g/ml

Secondary

Goat polyclonal to rabbit IgG at 1/50000 dilution

Predicted band size: 31 kDa

Observed band size: 31 kDa



Immunohistochemistry of paraffin-embedded human testis tissue using TA386676 at dilution of 1:100