

## Product datasheet for **TA386664**

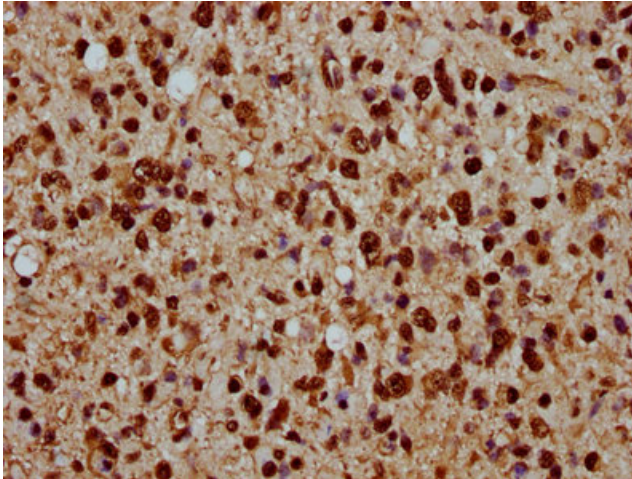
### H1-2 Rabbit Polyclonal Antibody

#### Product data:

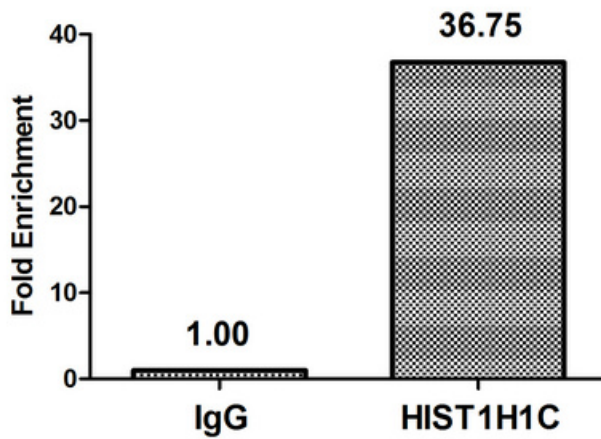
Product Type:	Primary Antibodies
Applications:	ChIP, IHC, WB
Recommended Dilution:	Recommended dilution: WB:1:100-1:1000, IHC:1:10-1:100
Reactivity:	Mouse, Rat, Human
Host:	Rabbit
Isotype:	IgG
Clonality:	Polyclonal
Immunogen:	Peptide sequence around site of Lys (45) derived from Human Histone H1.2
Formulation:	Preservative: 0.03% Proclin 300 Constituents: 50% Glycerol, 0.01M PBS, pH 7.4
Concentration:	lot specific
Purification:	Antigen Affinity Purified
Conjugation:	Unconjugated
Storage:	Upon receipt, store at -20°C or -80°C. Avoid repeated freeze.
Stability:	1 year from dispatch.
Database Link:	<a href="#">P16403</a>
Background:	Histone H1 protein binds to linker DNA between nucleosomes forming the macromolecular structure known as the chromatin fiber. Histones H1 are necessary for the condensation of nucleosome chains into higher-order structured fibers. Acts also as a regulator of individual gene transcription through chromatin remodeling, nucleosome spacing and DNA methylation (By similarity).



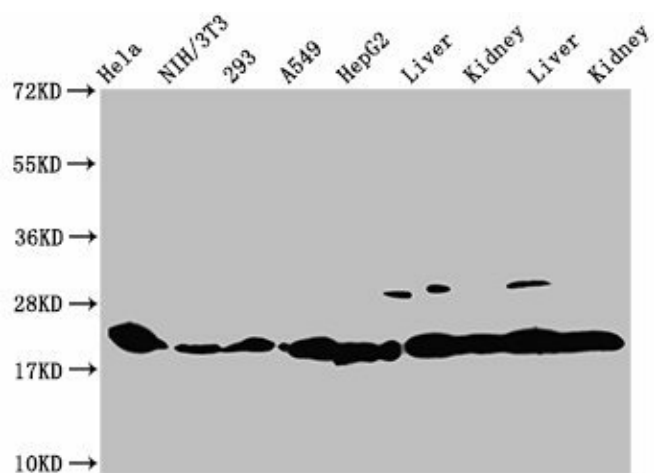
[View online »](#)

**Product images:**

IHC image of TA386664 diluted at 1:20 and staining in paraffin-embedded human glioma performed on a Leica Bond™ system. After dewaxing and hydration, antigen retrieval was mediated by high pressure in a citrate buffer (pH 6.0). Section was blocked with 10% normal goat serum 30min at RT. Then primary antibody (1% BSA) was incubated at 4°C overnight. The primary is detected by a biotinylated secondary antibody and visualized using an HRP conjugated SP system.



Chromatin Immunoprecipitation HeLa ( $4 \times 10^6$ ) were treated with Micrococcal Nuclease, sonicated, and immunoprecipitated with 5 $\mu$ g anti-HIST1H1C (TA386664) or a control normal rabbit IgG. The resulting ChIP DNA was quantified using real-time PCR with primers against the  $\beta$ -Globin promoter.



#### Western Blot

Positive WB detected in: HeLa whole cell lysate, NIH/3T3 whole cell lysate, 293 whole cell lysate, A549 whole cell lysate, HepG2 whole cell lysate, Rat liver tissue, Rat kidney tissue, Mouse liver tissue, Mouse kidney tissue

All lanes: HIST1H1C antibody at 1:100

Secondary

Goat polyclonal to rabbit IgG at 1/50000 dilution

Predicted band size: 22 kDa

Observed band size: 22 kDa