

## Product datasheet for **TA386663M**

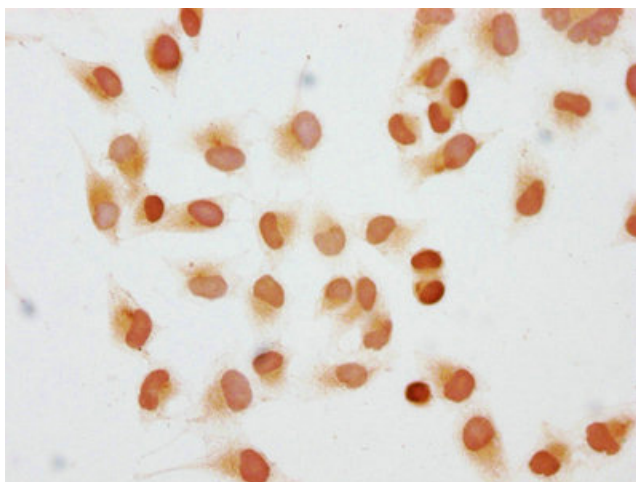
### H1-2 Rabbit Polyclonal Antibody

#### Product data:

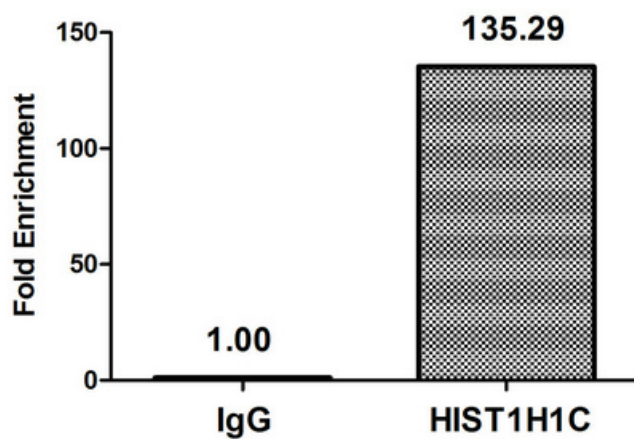
Product Type:	Primary Antibodies
Applications:	ChIP, ICC, IP, WB
Recommended Dilution:	Recommended dilution: WB:1:1000-1:5000, ICC:1:10-1:100, IP:1:200-1:2000
Reactivity:	Human
Host:	Rabbit
Isotype:	IgG
Clonality:	Polyclonal
Immunogen:	Peptide sequence around site of Di-methyl-Lys (45) derived from Human Histone H1.2
Formulation:	Preservative: 0.03% Proclin 300 Constituents: 50% Glycerol, 0.01M PBS, pH 7.4
Concentration:	lot specific
Purification:	Antigen Affinity Purified
Conjugation:	Unconjugated
Storage:	Upon receipt, store at -20°C or -80°C. Avoid repeated freeze.
Stability:	1 year from dispatch.
Database Link:	<a href="#">P16403</a>
Background:	Histone H1 protein binds to linker DNA between nucleosomes forming the macromolecular structure known as the chromatin fiber. Histones H1 are necessary for the condensation of nucleosome chains into higher-order structured fibers. Acts also as a regulator of individual gene transcription through chromatin remodeling, nucleosome spacing and DNA methylation (By similarity).



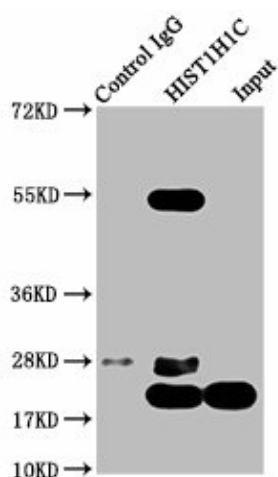
[View online »](#)

**Product images:**

Immunocytochemistry analysis of [TA386663] diluted at 1:10 and staining in Hela cells performed on a Leica Bond™ system. The cells were fixed in 4% formaldehyde, permeabilized using 0.2% Triton X-100 and blocked with 10% normal goat serum 30min at RT. Then primary antibody (1% BSA) was incubated at 4°C overnight. The primary is detected by a biotinylated secondary antibody and visualized using an HRP conjugated SP system.



Chromatin Immunoprecipitation Hela ( $4 \times 10^6$ ) were treated with Micrococcal Nuclease, sonicated, and immunoprecipitated with 5µg anti-HIST1H1C ([TA386663]) or a control normal rabbit IgG. The resulting ChIP DNA was quantified using real-time PCR with primers against the  $\beta$ -Globin promoter.

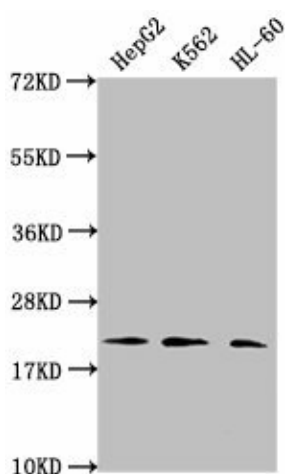


Immunoprecipitating HIST1H1C in HeLa whole cell lysate

Lane 1: Rabbit control IgG instead of [TA386663] in HeLa whole cell lysate. For western blotting, a HRP-conjugated Protein G antibody was used as the secondary antibody (1/2000)

Lane 2: [TA386663] (5µg) + HeLa whole cell lysate (1mg)

Lane 3: HeLa whole cell lysate (20µg)



Western Blot

Positive WB detected in: HepG2 whole cell lysate, K562 whole cell lysate, HL60 whole cell lysate

All lanes: HIST1H1C antibody at 1:2000

Secondary

Goat polyclonal to rabbit IgG at 1/40000 dilution

Predicted band size: 22 kDa

Observed band size: 22 kDa