

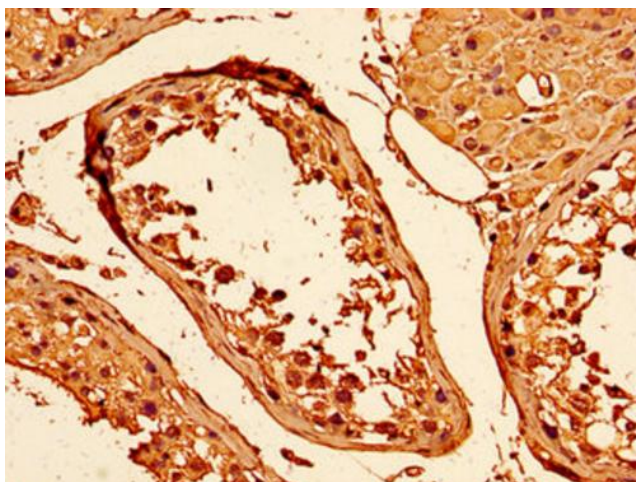
Product datasheet for **TA386652M**

H1-2 Rabbit Polyclonal Antibody

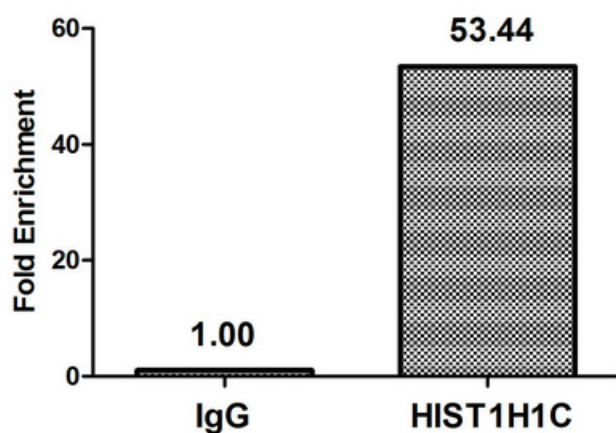
Product data:

Product Type:	Primary Antibodies
Applications:	ChIP, IHC, WB
Recommended Dilution:	Recommended dilution: WB:1:500-1:2000, IHC:1:20-1:200
Reactivity:	Human
Host:	Rabbit
Isotype:	IgG
Clonality:	Polyclonal
Immunogen:	Peptide sequence around site of Lys (96) derived from Human Histone H1.2
Formulation:	Preservative: 0.03% Proclin 300 Constituents: 50% Glycerol, 0.01M PBS, pH 7.4
Concentration:	lot specific
Purification:	Antigen Affinity Purified
Conjugation:	Unconjugated
Storage:	Upon receipt, store at -20°C or -80°C. Avoid repeated freeze.
Stability:	1 year from dispatch.
Database Link:	P16403
Background:	Histone H1 protein binds to linker DNA between nucleosomes forming the macromolecular structure known as the chromatin fiber. Histones H1 are necessary for the condensation of nucleosome chains into higher-order structured fibers. Acts also as a regulator of individual gene transcription through chromatin remodeling, nucleosome spacing and DNA methylation (By similarity).

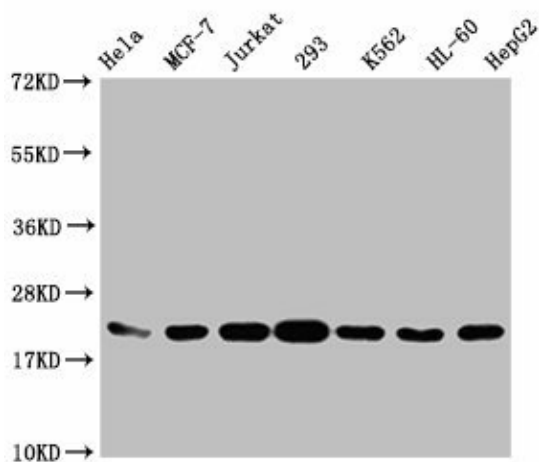
[View online »](#)

Product images:

IHC image of [TA386652] diluted at 1:50 and staining in paraffin-embedded human testis tissue performed on a Leica Bond™ system. After dewaxing and hydration, antigen retrieval was mediated by high pressure in a citrate buffer (pH 6.0). Section was blocked with 10% normal goat serum 30min at RT. Then primary antibody (1% BSA) was incubated at 4°C overnight. The primary is detected by a biotinylated secondary antibody and visualized using an HRP conjugated SP system.



Chromatin Immunoprecipitation Hela (4×10^6) were treated with Micrococcal Nuclease, sonicated, and immunoprecipitated with 5µg anti-HIS1H1C ([TA386652]) or a control normal rabbit IgG. The resulting ChIP DNA was quantified using real-time PCR with primers against the β -Globin promoter.



Western Blot

Positive WB detected in: HeLa whole cell lysate, MCF-7 whole cell lysate, Jurkat whole cell lysate, 293 whole cell lysate, K562 whole cell lysate, HL60 whole cell lysate, HepG2 whole cell lysate
All lanes: HIST1H1C antibody at 1:1000

Secondary

Goat polyclonal to rabbit IgG at 1/40000 dilution
Predicted band size: 22 kDa
Observed band size: 22 kDa