

## Product datasheet for **TA386640M**

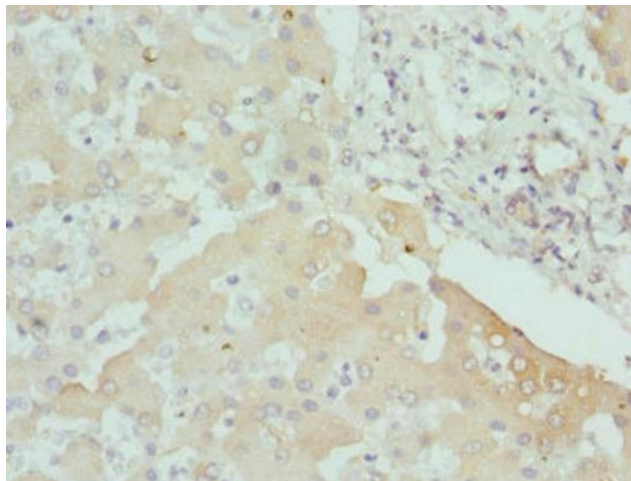
### CPN1 Rabbit Polyclonal Antibody

#### Product data:

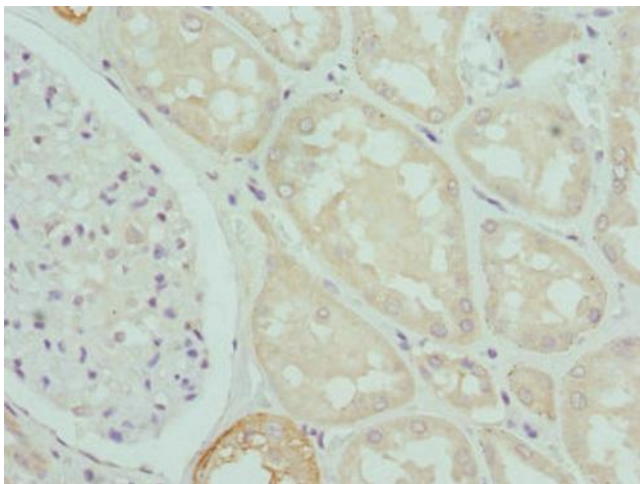
Product Type:	Primary Antibodies
Applications:	IHC, WB
Recommended Dilution:	Recommended dilution: WB:1:1000-1:5000, IHC:1:20-1:200
Reactivity:	Mouse, Human
Host:	Rabbit
Isotype:	IgG
Clonality:	Polyclonal
Immunogen:	Recombinant Human Carboxypeptidase N catalytic chain protein (209-458AA)
Formulation:	PBS with 0.02% sodium azide, 50% glycerol, pH7.3.
Concentration:	lot specific
Purification:	Antigen Affinity Purified
Conjugation:	Unconjugated
Storage:	Upon receipt, store at -20°C or -80°C. Avoid repeated freeze.
Stability:	1 year from dispatch.
Database Link:	<a href="#">P15169</a>
Background:	Protects the body from potent vasoactive and inflammatory peptides containing C-terminal Arg or Lys (such as kinins or anaphylatoxins) which are released into the circulation.



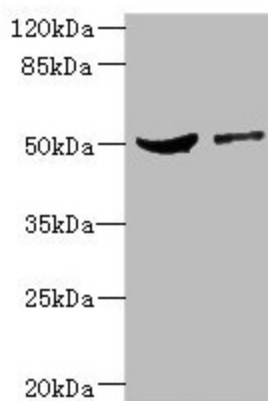
[View online »](#)

**Product images:**

Immunohistochemistry of paraffin-embedded human liver tissue using [TA386640] at dilution of 1:100



Immunohistochemistry of paraffin-embedded human kidney tissue using [TA386640] at dilution of 1:100



Western blot

All lanes: CPN1 antibody at 6.19 $\mu$ g/ml

Lane 1: Mouse liver tissue

Lane 2: MCF-7 whole cell lysate

Secondary

Goat polyclonal to rabbit IgG at 1/10000 dilution

Predicted band size: 52 kDa

Observed band size: 52 kDa