

Product datasheet for **TA386638**

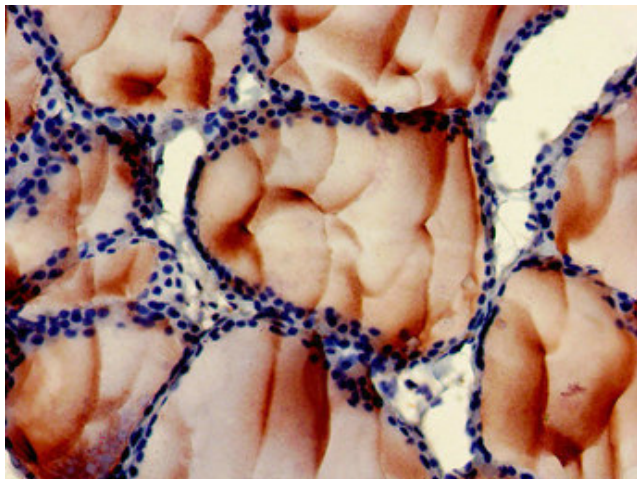
PLS3 Rabbit Polyclonal Antibody

Product data:

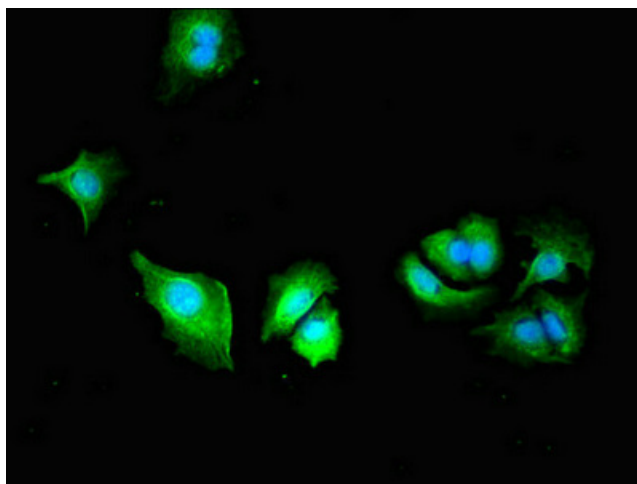
Product Type:	Primary Antibodies
Applications:	IF, IHC, WB
Recommended Dilution:	Recommended dilution: WB:1:500-1:5000, IHC:1:20-1:200, IF:1:50-1:200
Reactivity:	Mouse, Human
Host:	Rabbit
Isotype:	IgG
Clonality:	Polyclonal
Immunogen:	Recombinant Human Plastin-3 protein (310-455AA)
Formulation:	Preservative: 0.03% Proclin 300 Constituents: 50% Glycerol, 0.01M PBS, pH 7.4
Concentration:	lot specific
Purification:	>95%, Protein G purified
Conjugation:	Unconjugated
Storage:	Upon receipt, store at -20°C or -80°C. Avoid repeated freeze.
Stability:	1 year from dispatch.
Database Link:	P13797
Background:	Actin-bundling protein found in intestinal microvilli, hair cell stereocilia, and fibroblast filopodia. May play a role in the regulation of bone development.



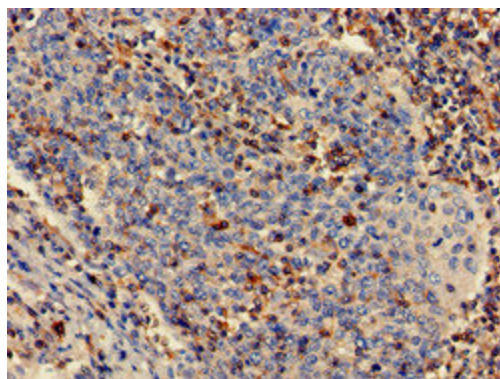
[View online »](#)

Product images:

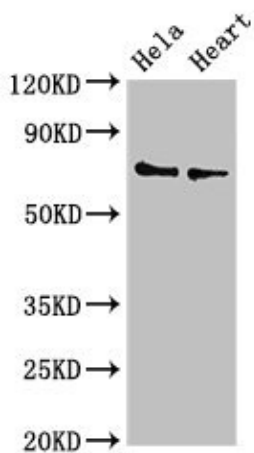
Immunohistochemistry of paraffin-embedded human thyroid tissue using TA386638 at dilution of 1:100



Immunofluorescent analysis of MCF-7 cells using TA386638 at dilution of 1:100 and Alexa Fluor 488-conjugated AffiniPure Goat Anti-Rabbit IgG(H+L)



Immunohistochemistry of paraffin-embedded human cervical cancer using TA386638 at dilution of 1:100



Western Blot

Positive WB detected in: HeLa whole cell lysate,
Mouse heart tissue

All lanes: PLS3 antibody at 3.4 μ g/ml
Secondary

Goat polyclonal to rabbit IgG at 1/50000 dilution
Predicted band size: 71, 70, 66 kDa
Observed band size: 71 kDa