

Product datasheet for **TA386635M**

ABHD2 Rabbit Polyclonal Antibody

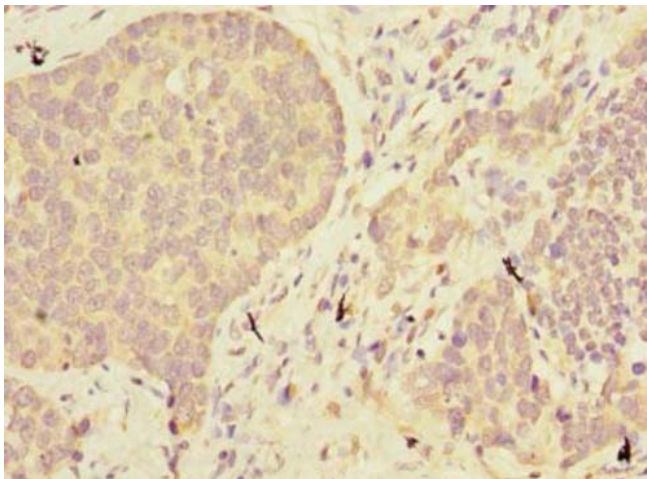
Product data:

Product Type:	Primary Antibodies
Applications:	IF, IHC, WB
Recommended Dilution:	Recommended dilution: WB:1:500-1:5000, IHC:1:20-1:200, IF:1:50-1:200
Reactivity:	Mouse, Rat, Human
Host:	Rabbit
Isotype:	IgG
Clonality:	Polyclonal
Immunogen:	Recombinant Human Monoacylglycerol lipase ABHD2 protein (31-320AA)
Formulation:	Preservative: 0.03% Proclin 300 Constituents: 50% Glycerol, 0.01M PBS, PH 7.4
Concentration:	lot specific
Purification:	>95%, Protein G purified
Conjugation:	Unconjugated
Storage:	Upon receipt, store at -20°C or -80°C. Avoid repeated freeze.
Stability:	1 year from dispatch.
Database Link:	P08910
Background:	May play a role in smooth muscle cells migration.

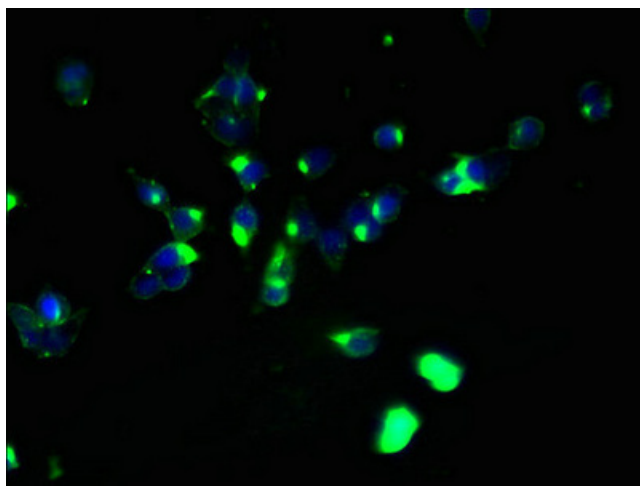


[View online »](#)

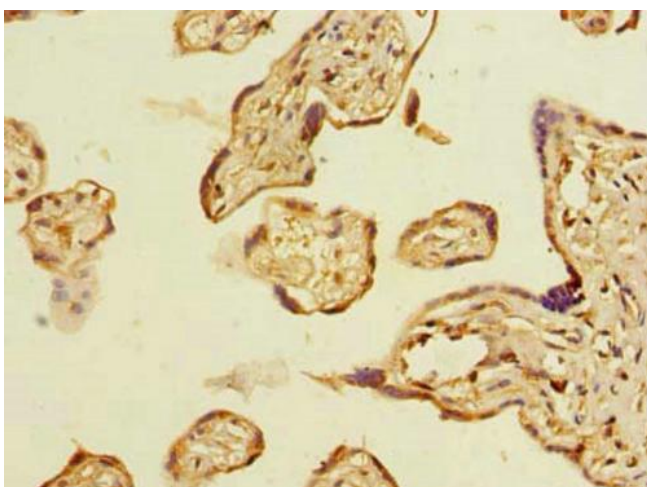
Product images:



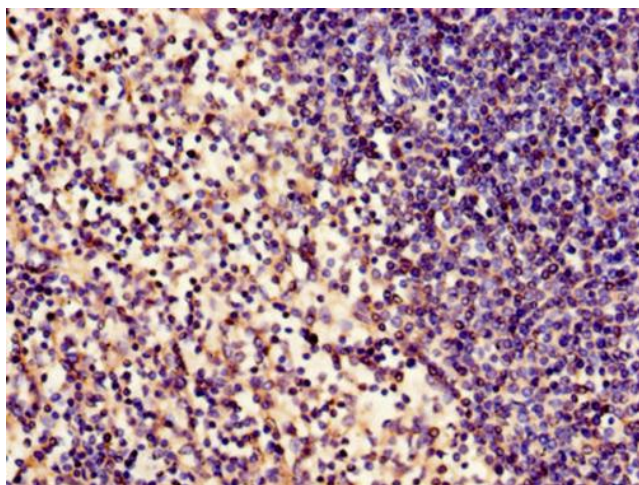
Immunohistochemistry of paraffin-embedded human gastric cancer using [TA386635] at dilution of 1:100



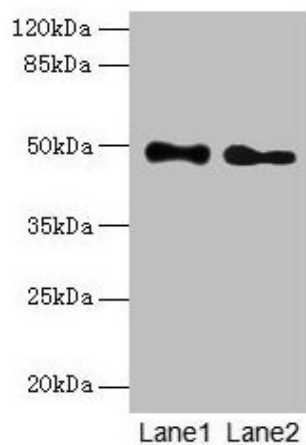
Immunofluorescent analysis of 293T cells using [TA386635] at dilution of 1:100 and Alexa Fluor 488-conjugated AffiniPure Goat Anti-Rabbit IgG(H+L)



Immunohistochemistry of paraffin-embedded human placenta tissue using [TA386635] at dilution of 1:100



Immunohistochemistry of paraffin-embedded human spleen tissue using [TA386635] at dilution of 1:100



Western blot
All lanes: ABHD2 antibody at 10 μ g/ml
Lane 1: Mouse heart tissue
Lane 2: Rat gonadal tissue
Secondary
Goat polyclonal to rabbit IgG at 1/10000 dilution
Predicted band size: 49 kDa
Observed band size: 49 kDa