

## Product datasheet for **TA386629**

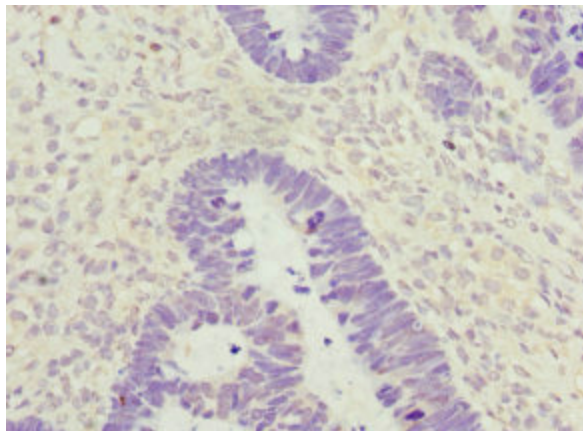
### ZWINT Rabbit Polyclonal Antibody

#### Product data:

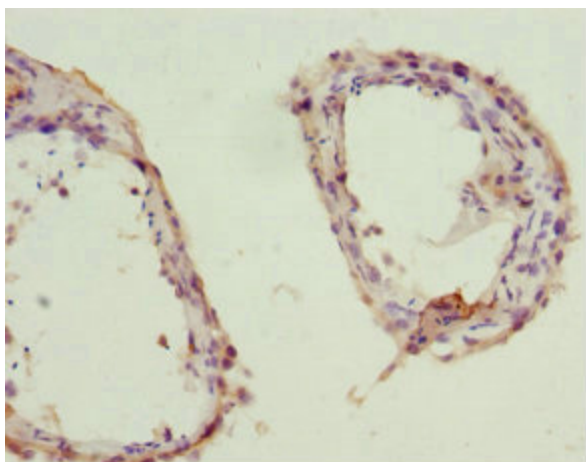
Product Type:	Primary Antibodies
Applications:	IHC, WB
Recommended Dilution:	Recommended dilution: WB:1:1000-1:5000, IHC:1:20-1:200
Reactivity:	Mouse, Human
Host:	Rabbit
Isotype:	IgG
Clonality:	Polyclonal
Immunogen:	Recombinant Human ZW10 interactor protein (1-277AA)
Formulation:	PBS with 0.02% sodium azide, 50% glycerol, pH7.3.
Concentration:	lot specific
Purification:	Antigen Affinity Purified
Conjugation:	Unconjugated
Storage:	Upon receipt, store at -20°C or -80°C. Avoid repeated freeze.
Stability:	1 year from dispatch.
Database Link:	<a href="#">O95229</a>
Background:	Part of the MIS12 complex, which is required for kinetochore formation and spindle checkpoint activity. Required to target ZW10 to the kinetochore at prometaphase.



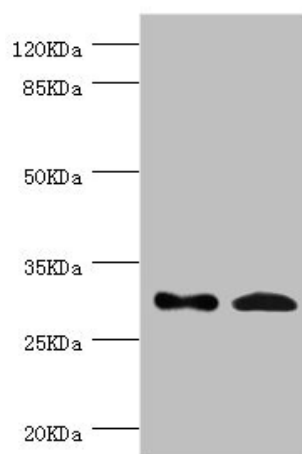
[View online »](#)

**Product images:**

Immunohistochemistry of paraffin-embedded human ovarian cancer using TA386629 at dilution of 1:100



Immunohistochemistry of paraffin-embedded human testis tissue using TA386629 at dilution of 1:100



## Western blot

All lanes: ZWINT antibody at 8.93 $\mu$ g/ml

Lane 1: HeLa whole cell lysate

Lane 2: Mouse liver tissue

Secondary

Goat polyclonal to rabbit IgG at 1/10000 dilution

Predicted band size: 32, 26 kDa

Observed band size: 32 kDa