

Product datasheet for **TA386625**

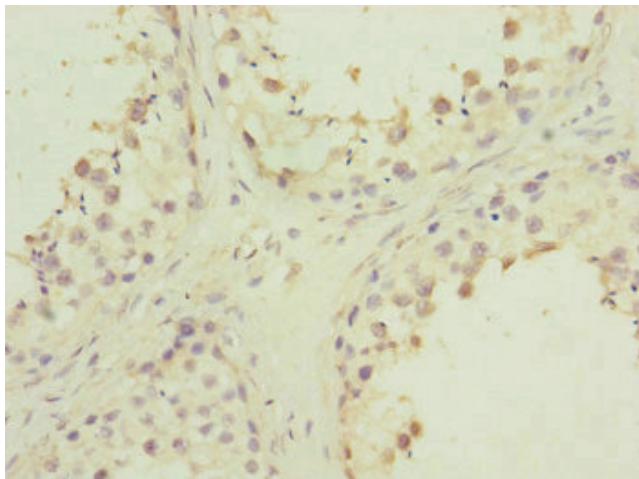
PMPCB Rabbit Polyclonal Antibody

Product data:

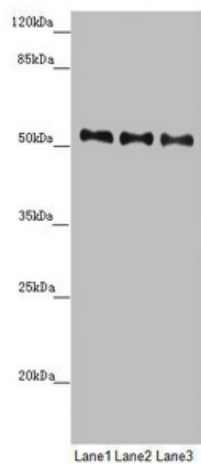
Product Type:	Primary Antibodies
Applications:	IHC, WB
Recommended Dilution:	Recommended dilution: WB:1:1000-1:5000, IHC:1:20-1:200
Reactivity:	Mouse, Human
Host:	Rabbit
Isotype:	IgG
Clonality:	Polyclonal
Immunogen:	Recombinant Human Mitochondrial-processing peptidase subunit beta protein (110-380AA)
Formulation:	PBS with 0.02% sodium azide, 50% glycerol, pH7.3.
Concentration:	lot specific
Purification:	Antigen Affinity Purified
Conjugation:	Unconjugated
Storage:	Upon receipt, store at -20°C or -80°C. Avoid repeated freeze.
Stability:	1 year from dispatch.
Database Link:	O75439
Background:	Cleaves presequences (transit peptides) from mitochondrial protein precursors.



[View online »](#)

Product images:

Immunohistochemistry of paraffin-embedded human testis tissue using TA386625 at dilution of 1:100



Western blot
All lanes: PMPCB antibody at 0.69 $\mu\text{g/ml}$
Lane 1: Mouse heart tissue
Lane 2: Mouse kidney tissue
Lane 3: Mouse liver tissue
Secondary
Goat polyclonal to rabbit IgG at 1/10000 dilution
Predicted band size: 54 kDa
Observed band size: 54 kDa