

Product datasheet for **TA386623M**

ENTPD5 Rabbit Polyclonal Antibody

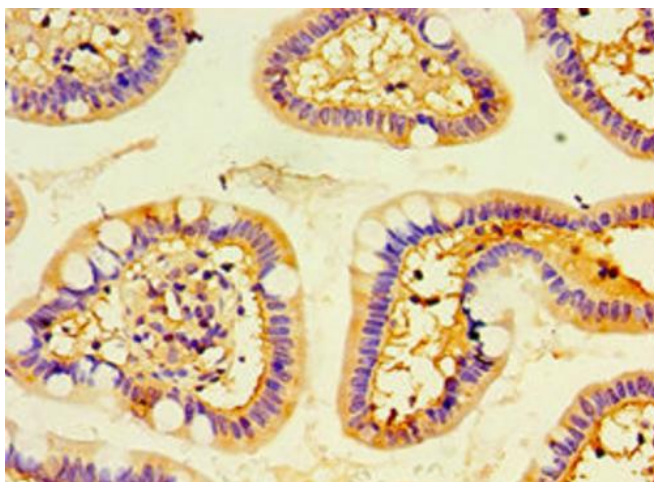
Product data:

Product Type:	Primary Antibodies
Applications:	IHC, IP, WB
Recommended Dilution:	Recommended dilution: WB:1:1000-1:5000, IHC:1:20-1:200, IP:1:200-1:2000
Reactivity:	Mouse, Human
Host:	Rabbit
Isotype:	IgG
Clonality:	Polyclonal
Immunogen:	Recombinant Human Ectonucleoside triphosphate diphosphohydrolase 5 protein (149-428AA)
Formulation:	PBS with 0.02% sodium azide, 50% glycerol, pH7.3.
Concentration:	lot specific
Purification:	Antigen Affinity Purified
Conjugation:	Unconjugated
Storage:	Upon receipt, store at -20°C or -80°C. Avoid repeated freeze.
Stability:	1 year from dispatch.
Database Link:	Q75356
Background:	Uridine diphosphatase (UDPase) that promotes protein N-glycosylation and ATP level regulation. UDP hydrolysis promotes protein N-glycosylation and folding in the endoplasmic reticulum, as well as elevated ATP consumption in the cytosol via an ATP hydrolysis cycle. Together with CMPK1 and AK1, constitutes an ATP hydrolysis cycle that converts ATP to AMP and results in a compensatory increase in aerobic glycolysis. The nucleotide hydrolyzing preference is GDP > IDP > UDP, but not any other nucleoside di-, mono- or triphosphates, nor thiamine pyrophosphate. Plays a key role in the AKT1-PTEN signaling pathway by promoting glycolysis in proliferating cells in response to phosphoinositide 3-kinase (PI3K) signaling.

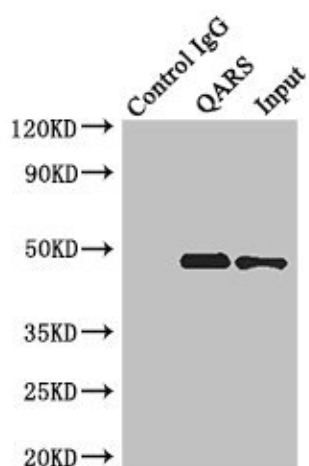


[View online »](#)

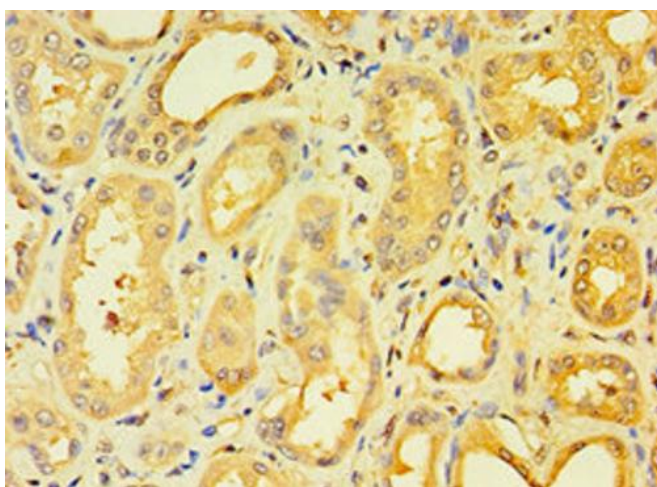
Product images:



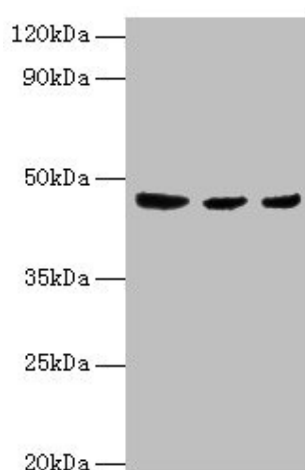
Immunohistochemistry of paraffin-embedded human small intestine tissue using [TA386623] at dilution of 1:100



Immunoprecipitating ENTPD5 in HeLa whole cell lysate
 Lane 1: Rabbit control IgG instead of (1 μ g) instead of [TA386623] in HeLa whole cell lysate. For western blotting, a HRP-conjugated anti-rabbit IgG, specific to the non-reduced form of IgG was used as the Secondary antibody (1/50000)
 Lane 2: [TA386623] (4 μ g) + HeLa whole cell lysate (500 μ g)
 Lane 3: HeLa whole cell lysate (20 μ g)



Immunohistochemistry of paraffin-embedded human kidney tissue using [TA386623] at dilution of 1:100



Western blot
All lanes: ENTPD5 antibody at 4µg/ml
Lane 1: Mouse liver tissue
Lane 2: Mouse kidney tissue
Lane 3: Mouse gonad tissue
Secondary
Goat polyclonal to rabbit IgG at 1/10000 dilution
Predicted band size: 48 kDa
Observed band size: 48 kDa